

MIDDLE TENNESSEE



GENEALOGY

VOLUME VII, NO. 4 SPRING 1994

MAY PROGRAM

What's New in Archives and Manuscripts
at the State Library

Speaker: Ann Alley, Senior Archivist

March 19, 1994 - 1:00 P.M.

AUDITORIUM, TENNESSEE STATE LIBRARY & ARCHIVES
403 Seventh Avenue North

published by
MIDDLE TENNESSEE GENEALOGICAL SOCIETY
P. O. BOX 190625/NASHVILLE, TN 37219-0625

**MIDDLE
TENNESSEE
COUNTIES**

Bedford
Cannon
Cheatham
Clay
Coffee
Davidson
DeKalb
Dickson
Fentress
Franklin
Giles
Grundy
Hickman
Houston
Humphreys
Jackson
Lawrence
Lewis
Lincoln
Macon
Marshall
Maury
Montgomery
Moore
Overton
Perry
Pickett
Putnam
Robertson
Rutherford
Smith
Stewart
Sumner
Trousdale
VanBuren
Warren
Wayne
White
Williamson
Wilson

POLICIES

GENERAL: Neither the Editor nor the Middle Tennessee Genealogical Society accepts responsibility for accuracy of material. All materials submitted become property of the Society.

SUBMITTING ARTICLES FOR PUBLICATION: Please do. We'd like to see Bible Records, Family Histories, County Records, Cemetery Records, "how-to" articles of general interest, historical anecdotes--any useful or interesting tidbits happened upon while researching that other members may never see. Material should be limited to a published length of 5 pages.

Please make sure hand writing is legible or the document is typed. If you are writing with a word processing program on your computer and can export to ASCII, a computer disk and hard copy is the easiest way for the editor to deal with material. If you happen to use WordPerfect 5.0 a simple disk copy or backup will work fine.

Please include documentation and, in the case of Bible records, written permission from the owner of the Bible. In addition to your name and address we'd appreciate your including your phone number. A final note--if you've got something you just can't quite, but can almost, pull together we'll be happy to work with you on a final edit.

ASK US: Specific research questions and problems will be discussed as space permits in the quarterly.

QUERIES: Will be included in order of receipt as space permits.

BOOK REVIEWS: Books or unique source material available for a fee should be sent directly to Mrs. Shirley Wilson, Book Review Editor, 106 Leeward Point, Hendersonville, TN 37075. All materials become property of the book review editor to be distributed as appropriate.

Editor: Barbara Sistler

Associate Editor: Irene Griffey

Editorial Staff: Gale Bamman, Bobby Ezell, William D. Jackson, Jean Herndon, Dorothy Scott Johnson, Dorothy Potter, Betsy Ragsdale, Mary Sue Smith, George Watson, Shirley Wilson

OFFICERS

1992 - 1993

President	Byron Sistler
Vice President	Mary Glenn Hearne
Recording Secretary	Danya Downey
Corresponding Secretary	Millie Abner
Treasurer	Donna Powell
Directors	Gale Bamman
.....	Mary Sue Smith
.....	Nida Wheeler
.....	Bobby Ezell

Volume 7, Number 4 -- Spring 1994

TABLE OF CONTENTS

Editor's Thoughts	146
President's Page, Byron Sistler	147
Transportation in Early Middle Tennessee by Susan Douglas Wilson	148
The Claiborne Harris Family of Yellow Creek by Sarah Andrews	153
David C. Greeson Bible Record transcribed by Sandra Tedford	158
Ask Us	159
Time Line: Ann (Snell) King Blackman McClendon by Jane Grey Buchanan	160
January 1994 Show and Tell Meeting	162
Petition of Sarah Cheatham (Col.) contributed by George Watson	164
Will of Andrew Henderson abstracted by Mary Sue Smith	165
Craighead Adoption (Col.) contributed by Mary Sue Smith	166
Computer "Newsletter" by William D. Jackson	167
Book Reviews by Shirley Wilson	171
Selected Cemeteries in Wilson County, Tennessee by Thomas E. Partlow	172
1880 Fentress County Head of Household Index, Sistler	176
Abstracts of Mero District Minutes by Dorothy Scott Johnson	183
Tennessee Supreme Court Records contributed by Betsy Ragsdale and Gale Bamman	187
Queries, Bobby Ezell	191

Editor's Thoughts

We stomped our feet and waved our arms and gnashed our teeth, but it didn't do a bit of good. For those of you who notice things like the color of the cover of this journal—specifically the fact that starting with the issue last fall the color of yellow changed—apparently paper has dye lots just as fabric does. The manufacturer is marketing this color as the same color we had before. Just like the rest of life. As soon as one is comfortable and satisfied with a product it is either discontinued or improved and we start over! On the other hand, this is not one of life's major worries.

On the subject of life's aggravations—SASE stands for self-addressed-stamped-envelope. LSASE means a long one of same. We plan to include this information in every issue somewhere. I'll bet once a week I answer that question for a customer who is absolutely at sea about where to get the answer to that mystery. And it's true, isn't it. Odd little puzzles we can't find the answer for niggles away. Who said the only dumb question is the one you didn't ask?

In this issue: a computer newsletter. Four pages including software reviews. It was intended to limit the space for this newsletter to 2 pages but the information took over and demanded a room of its own. Next issue will be 2 pages if it has to be cut off in the middle of a sentence. For those of you who want a separate newsletter that can be expanded as needed, let Bill Jackson know. The board is amenable but there has to be enough active interest out there to support it.

We're including a couple pages with snapshots of the January meeting. It was truly a lot of fun. We even had a winner on stumping the whole group.

Everyone knows a person that is constantly followed around by curiosities. One of those people that you'd swear is lying, or at the very least exaggerating wildly, and every word proves to be true—time after time. When it comes to unusual, never found by anyone else, odd bits of genealogical records Sue Smith has some sort of karma. She absolutely attracts them. George Watson is proving to be a close second on that score. And what's more, they copy documents, abstract text and call saying "guess what I found." Two on one editorial staff—how lucky can we get!

Queries were unusually light this quarter. Couldn't have happened at a better time, editorially, as that is what made it possible to stretch the space to include the entire computer newsletter. But, no we didn't cut them, it just worked out that way.

And an Ask Us!

bws

PRESIDENT'S PAGE

This issue's cover reveals that the May meeting will not be held at the usual place; we are congregating at the auditorium of the Tennessee State Library. It is a temporary move, made necessary by a previous commitment by the Ben West Library. In July we will be back at the usual meeting place.

This temporary change cannot be emphasized enough, particularly since the May meeting is the annual business meeting of the Society, when we elect officers and directors and, where necessary, transact other important business.

The slate of officers and directors proposed by this year's nominating committee will be the same as is currently serving, with the exception of Anne Bond, who has been nominated as a Director in place of Gale Bamman, who is going off the board June 1.

Please note that renewal of dues is again upon us. Contrary to the imagination of some, our membership year starts June 1 and renewals are due that date. Note also that at the December 1993 general membership meeting an increase in dues to \$18.00 annually was voted (\$21.00 if paid after June 30). The increase became necessary because our editorship is now a remunerated position.

Our society continues to grow, albeit more slowly than one might hope. The major reason for desiring growth, aside from the obvious one of getting information to more people, is that the larger the membership, the lower the per capita cost of maintaining services. The dues increase impending June 1 might have been avoided if membership had grown faster.

As of the middle of March we had about 675 paid members; this figure should reach 700 by the end of the membership year. Unfortunately the attrition rate is high in any genealogical society, probably averaging 25% per year. So each year we have to make up for those who do not renew before an actual membership increase can commence.

In order to reach more potential members your board is now considering steps to increase publicity about the society, including advertising in *The Genealogical Helper* and perhaps other organs.

On a lighter note—while weather seems to have held down attendance at the January meeting, our “Show and Tell” program proved highly successful and enjoyed by all who came.

Byron Sistler

Susan Wilson comes by her interest in transportation quite naturally—the latter part of this article deals with her family transportation “history.”

TRANSPORTATION IN EARLY MIDDLE TENNESSEE

by Susan Douglas Wilson

The first inhabitants of the Middle Tennessee area used two major forms of transportation. The first form was overland travel. Indians utilized animal paths and made their own trails between hunting grounds and home. Many of these trails became modern day roads and highways. The Natchez Trace, the Cumberland Trace, The Black Fox Trail, the Nickajack Trail, and the Great South Trail were a few of the trails used by emigrants who settled in the Middle Tennessee area (1). The second form of transportation was water travel on rivers and streams. Canoes, dugouts, flatboats and keelboats were the primary vehicles of water travel.

In 1779 and 1780, the first groups of settlers in Middle Tennessee used these forms of travel. James Robertson made an overland journey on foot into the area from the eastern settlements by the way of the Cumberland Gap, through central Kentucky, south to Tennessee in one of the coldest winters in decades. John Donelson made a circuitous journey with a flotilla of flatboats beginning on the Holston River and followed the Tennessee River, the Ohio River, and the Cumberland River before landing in the Nashville area. At one point they landed on a shoal and had to make 30 people leave the boat to lighten it. One boat was driven onto the point of an island and sunk by strong currents. One family developed smallpox. Indians were a major hazard. One man was killed and 27 taken prisoner. By the end of the journey the flotilla was out of bread and the travelers suffered from hunger and fatigue. Both of these journeys illustrated the hazards of transportation in those times. The travelers were at the mercy of geographic obstacles, Indian attacks and weather conditions.

Two of the earliest roads in use in Middle Tennessee were the Walton Road, also known as Avery's Trace, and the Natchez Trace. The Walton road led from the Washington district to the Mero district. The improvement of this road led to Tennessee's first appropriation for internal improvements. In 1799 the General Assembly appointed commissioners, delegated funds and authorized tolls to be collected (2). The state's first turnpike company, the Cumberland Turnpike Company, was established to collect tolls and to pay for building the road and to provide for its upkeep (3). The Natchez Trace began as an Indian trail and later became an important overland route for the Middle Tennessee area. It was used as a major thoroughfare between Nashville and Natchez and on to New Orleans.

The War of 1812 forced political leaders to recognize that transportation was a big problem in the western settlements. As a result, the federal government began construction of a military road from Nashville, through Columbia to Madisonville, Louisiana in 1817 (4). This road was one of the last constructed in Middle Tennessee with federal funds until the next century. The majority of turnpikes and roads in Middle Tennessee during this period were funded by private enterprise with some government subsidies.

Governor William Carroll is credited with leading Tennessee toward a cohesive policy of internal improvements. He expressed doubt that the federal government could finance many state internal improvement projects and called upon the legislature for state action (5). In 1821 the General Assembly enacted a law that grouped roads

into three classes. First class roads were stage roads which were twelve feet wide with bridges and mile markers. Second class roads were wagon roads which were ten feet wide and third class roads were just wide enough for a single horse and rider (6).

Throughout the next several years, funds were appropriated and a board of internal improvement with commissioners was authorized. An amendment to the state constitution called for a well regulated system of internal improvements to develop resources for the state of Tennessee (7). In 1838 the General Assembly passed a law to establish a state bank to raise funds for internal improvement projects and the state became a subscriber for capital stock in railroads, macadamized turnpikes, graded turnpikes and sanded turnpikes (8). The legislature of 1840 brought all of this growth to a halt by repealing all previous laws authorizing the state government to subscribe stock for internal improvements (9). This development set overland transportation back in Middle Tennessee for many years. Appreciable attention was not paid to road building until the end of the century.

During the first few decades of the nineteenth century, overland routes were more often used for local traffic with water travel being used for long distance travels. The Middle Tennessee area relied on imported goods from Baltimore, Philadelphia, and Pittsburgh. Cast and wrought iron, wire, nails, tools, glass, leather goods, white lead and paints, chemicals and flour were commonly shipped by barges, keelboats and flatboats on the Ohio and Cumberland Rivers (10). The Mississippi River provided the region with a

Macadamized Roads

Named after John L. MacAdam (1756-1836), a Scottish inventor who developed the process, these roads were basically formed of thick layers of broken rock, with drainage provided by ditches alongside.

The invention reached America at an early date, with the first macadamized road being constructed between Lancaster (PA) and Philadelphia in 1792. At a later date these roads were improved periodically by application of tar or bitumen. Macadam remained the basic type of "good" road in this country until after 1900.

For anyone who longs for details on this subject we refer you to *A Treatise on Highway Construction, A Text-Book and Work of Reference for All Who May Be Engaged in the Location, Construction, or Maintenance of Roads, Streets, and Pavements* by Austin T. Byrne, C.E., Fifth Ed., John Wiley & Sons, NY, 1910. That just about says it all!

commercial route to New Orleans. A round trip voyage from Nashville to New Orleans took around five months (11). Barges, flatboats and keelboats relied on river current for movement. The boats could be poled and rowed but were at the mercy of Indian attacks, weather, river conditions and upstream travel.

Steamboats were a big improvement over the flatboats. A steamboat moved under its own power and could haul people and goods in both directions on the river. The Middle Tennessee area was fortunate to have access to the Cumberland River and the Tennessee River. The Cumberland River was the most important tributary of the Ohio and was one of the most navigable rivers in the country. The Tennessee River was a minor stream for steamboat operations because of sparse population centers and the treacherous obstacle of Muscle Shoals. Harbors and navigable rivers were usually considered to be in a different class of appropriations than roads and some federal funds were available. However, the Cumberland and the Tennessee Rivers were the only tributaries of the Ohio improved at the federal government's expense (12).

The first steamboat to ply the Cumberland was the General Jackson in 1818 (13). By the 1830's steamboat traffic on the Cumberland was the principal means of hauling goods and people in Middle Tennessee. Areas not easily accessible by roads and turnpikes were

able to transport goods by steamboat due to their proximity to the Cumberland and its tributaries. By 1845, passengers could make a round trip to New Orleans in fifteen days (14). This relatively speedy turnover of goods allowed the Middle Tennessee area to become an important agricultural market.

By 1800 the Southwest territories were growing rapidly. This area had yet to see its first stagecoach line. The unsettled wilderness was a barrier. Stage lines were expensive to build and maintain in areas with barely passable roads. But even then the mail had to go through. The first mail service in Tennessee was extended from Staunton, Virginia to Knoxville in 1794. The service went on to Nashville in 1797 and to Natchez in 1800. A decade later stages entered the region. In 1807 Postmaster General Gideon Granger contracted with Benjamin White for a stagecoach route from Knoxville to Nashville.

An extension line to Huntsville, Alabama from the Nashville to Knoxville line and branching from McMinnville was opened in 1820. In 1819 a traveler could ride by connected stagecoach lines from Anson, Maine via Washington, D. C. to Nashville, a distance of 1,448 miles.

Up until the beginning of the Civil War, there were sixteen major stagecoach lines departing from Nashville. These coaches carried fifteen passengers and used four horse teams. The average speed of the coaches was six miles per hour with team changes ap-

proximately every ten miles. Many of these stagecoach lines also carried the U.S. mail and were a source of news and information in small towns. The major stagecoach lines departing from Nashville ran to Louisville, Chattanooga, Memphis, Huntsville, Tusculumbia, Florence, Clarksville, Hopkinsville, Springfield and Russellville. Smaller accommodation coaches, usually consisting of two horse teams, ran to Triune, Nolensville, Gallatin, Lebanon and Columbia (15).

The railroad became Middle Tennessee's third mode of transportation and played a major role in the economic development of the region. In the first years of their introduction, railroads were a supplement to steamboat transportation. However, within a few years, railroads would overtake steamboats as the main means of moving people and goods.

During the 1830's and 1840's many railroads were chartered by the state. Most of these never saw completion. Middle Tennessee's first railroad, the Nashville and Chattanooga, made its first run in 1851 and was completed to Chattanooga in 1854. The Nashville and Decatur was chartered in 1854 and completed in 1859 (16). The Louisville and Nashville railroad was constructed as a result of both cities' attempts to neutralize the other as a source of economic competition (17). The L & N railroad company played a significant role in the history of transportation in Middle Tennessee for the rest of the century.

By 1860 other modes of transportation in Middle Tennessee suffered as the railroads grew and expanded. State funds went into railroad development rather than steamboat and road development. As a result, Tennessee had 1253 miles of railroad track in 1860, while steamboat and stagecoach development was beginning to wane (18).

With the onset of the Civil War, the improvement of civilian transportation systems in Tennessee came to a halt. Many of the transportation facilities became geared to military operations. Steamboats and railroads were refitted to carry troops, cargo and supplies.

When Nashville surrendered to Union troops in February of 1862, the city became a major army supply depot. Railroads and steamboats were seized and Union forces were able to utilize overland and water transportation systems to great advantage.

Federal troops were hampered to some extent by transportation problems. Disparities in the width and gauge of railroad lines made movements of soldiers and supplies from one line to another difficult. Troops were also harassed in their attempts to keep supply lines open by marauding bands of Confederate cavalry under the lead-

ership of Nathan Bedford Forrest and John Morgan. Railroads and steamboats were the main targets. Bridges were burned, track was destroyed, tunnels were blown up and boats were captured and sunk (19).

The Civil War was one of the first military conflicts in which the railroad played a role. Railroads transported troops and supplies faster than other methods of transport. Operations and construction were able to follow the troop movements of both armies. By the war's end, the railroad had become the nation's primary form of transportation (20).



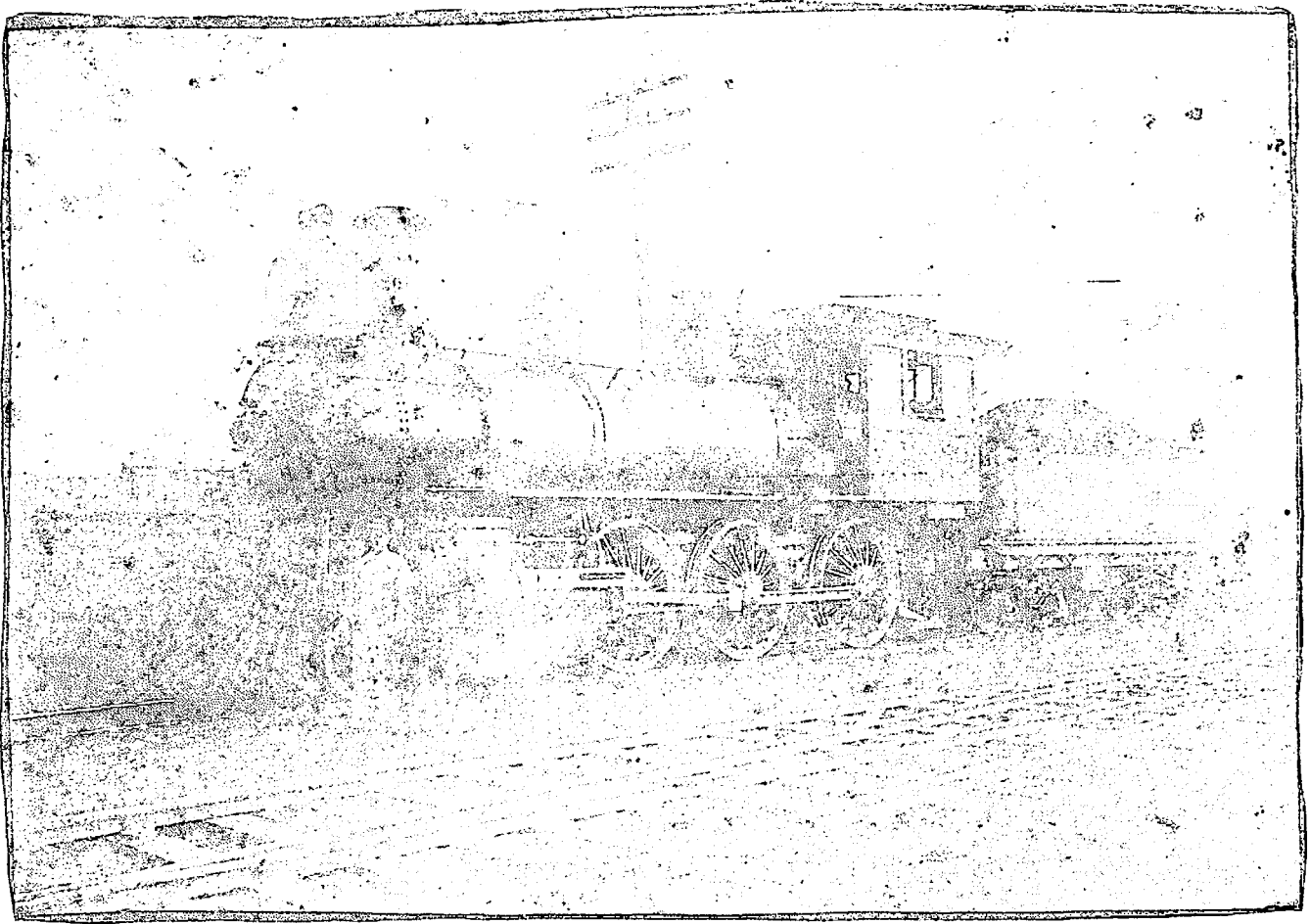
This picture of Thomas Douglass and his stagecoach was taken in front of the Columbia House, Columbia, Tenn. ca. 1870.

Thomas Douglass (1806-1878)

Thomas Douglass (1806-1878) was my paternal great-great grandfather. Family history says he was born in Scotland, but all his census returns say Washington, D. C. I first found him in Lawrence County, Tenn. in 1831. In 1847 he took charge of a livery stable at the Columbia House in Columbia, Tenn. Around this time he advertised a line of four horse post carriages from Columbia to Nashville. Families would be accommodated from Columbia to Huntsville and Florence for an extra charge.

Thomas Douglass drove his stagecoach from Columbia to Mt. Pleasant and on south.

He was a colorful character, known as "Uncle" Tommy. He was noted as a horse doctor and when the Civil War began he went into the calvary to practice this skill. He was the father of eleven children. All six of his sons (the ones who survived the Civil War) were employed by the Nashville & Decatur and, later, the Louisville & Nashville railroads.



Thomas Jefferson Douglass pictured in front of his locomotive with his fireman.

Thomas Jefferson Douglass (1843-1917)

My great grandfather was Thomas Jefferson Douglass (1843-1917), the son of Thomas Douglass. He was born in Wayne County, Tenn. He began his work on the railroads by becoming a grading foreman on the Tennessee & Alabama railroad. In 1859 he became a fireman on the Nashville & Decatur railroad. He joined the calvary during the Civil War and spent two years in a prisoner of war camp

After the war he resumed his work on the railroad and became an engineer in 1867. After the lease of the N & D by the Louisville & Nashville railroad, he stayed on as an engineer. Thomas Jefferson was killed in a train wreck in 1917 in Wheelerton, Tenn. He had been an engineer for 49 years and when he died was the oldest engineer in years and point of service employed by the L & N. He was the father of seven children.



Edward Douglass (1878-1958)

Edward Douglass (1878-1958) was my grandfather and the son of Thomas Jefferson Douglass. He was born in Nashville. Edward began working for the L & N in 1895 as a fireman and became an engineer in 1905. He ran the Nashville to Birmingham route and later engineered the Pan-American on the same run. The arrival of this train was broadcast every day except Sunday on the WSM radio station with a blast of the regulation crossing whistle.

When he retired in 1943 he had 48 years of service. For a short time after retirement, Edward drove a locomotive on a spur line for Vultee Aircraft Corporation. He was the father of eight children. The seventh child was my father, Frank Douglas.

Notice the difference between the spelling of the first three Douglass names and my father's name (Douglas). This is not a typographical error. Half of Edward Douglass's children spelled their name with one 's.'

Edward Douglass pictured in front of his locomotive.

REFERENCES

1. Meyer, William E., Indian Trails of the Southeast (Blue and Gray Press, Nashville, TN), pp. 99-116.
2. Acts of the Tennessee General Assembly, 1799, pp. 29-31.
3. Acts of the Tennessee General Assembly, 1801, pp. 182-185.
4. National Highway Users Conference, Military Roads (Washington, D.C., 1935), page 5.
5. Folmsbee, Stanley John, Sectionalism and Internal Improvements in Tennessee 1796-1845, (East Tennessee Historical Society, 1939), page 33.
6. Acts of the Tennessee General Assembly, 1821, pp. 10-11.
7. The Journal of the Constitutional Convention of the State of Tennessee, 1834, Section 9:page 405.
8. Acts of the Tennessee General Assembly, 1838, page 163.
9. Herring, Daniel H., A History of Transportation in Tennessee (Typewritten, xeroxed copy in TSLA, 1976), page 49.
10. Folmsbee, page 14.
11. Douglas, Byrd, Steamboatin' on the Cumberland (Tennessee Book Company, Nashville, TN, 1961), page 68.
12. Hunter, Louis C., Steamboats on Western Rivers, (Harvard University Press, Cambridge, MA, 1949), pp. 37-39.
13. *Ibid.*, page 38.
14. Douglas, page 68.
15. Slaughter, G.H., Stagecoaches and Railroads (Hasslock and Ambrose, Nashville, TN, 1894), pp. 9-15.
16. Herring, page 59.
17. Klein, Maury, History of the Louisville and Nashville Railroad (The Macmillan Company, New York, NY, 1972), pp. 1-10.
18. Herring, page 66.
19. *Ibid.*, pp. 74-75.
20. *Ibid.*, page 72.

THE CLAIBORNE HARRIS FAMILY OF YELLOW CREEK and Some of Their Neighbors

Contributed by Sarah Andrews

Claiborne Harris and his descendants left a paper trail through North Carolina, Tennessee, Mississippi, Arkansas, Illinois, Louisiana and Texas. Although the name is spelled in various ways—Claburn, Claborn, Claiborn and Claiborne—the latter spelling has been accepted for consistency in this article.

As early as 1800, Claiborne Harris appeared on a tax list in Anson County, North Carolina. Claiborne Harris witnessed a deed of sale from Henry Hill to Asa Yarbrough on 8 December 1804. This necessitated his appearance in Anson County Court in January 1806 to declare on oath that he had witnessed the sale. The land sold was on the waters of Thomson Creek in Anson County and joined land owned by James Little and Jacob Mitchell. Henry Hill

lived in Darlington District, South Carolina and Asa Yarbrough lived in the District of Marian. On 7 April 1806, Claiborne Harris, along with James Smith, declared on oath in the Montgomery County Court (North Carolina) that he had witnessed a deed for James Reynolds.

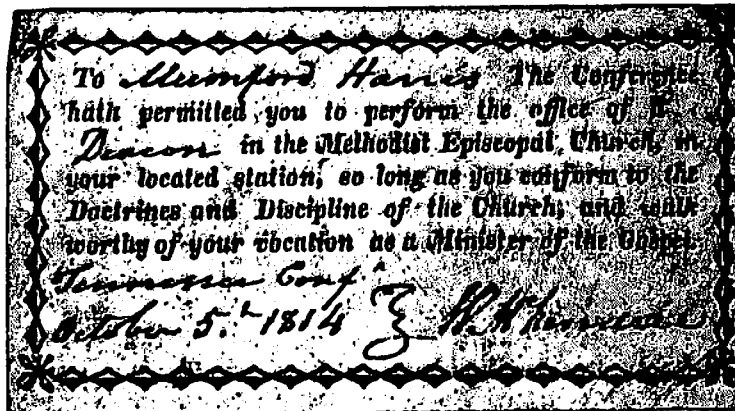
In March of 1807, Claiborne Harris, Isaac Nichols and James Goodrich sold their individual tracts of land in Anson County, North Carolina, and are believed to have traveled together to the Yellow Creek area in Tennessee. Yellow Creek rises in Dickson County, flows through Houston County (then Stewart County) and empties into the Cumberland River in Montgomery County.

Jury duty frequently brought Claiborne Harris to the courthouse. He served along with James Goodwin in 1812. In September of 1815, he served as a juror for a court case against Montgomery Bell, a large iron manufacturer of the area.

James Goodrich purchased from Michael and Jane Dickson, land on both sides of Yellow Creek about one half mile below the Chickasaw Trace in May of 1807. Claiborne

and Mumford Harris both witnessed this purchase. On 20 October 1807, Claiborne and Mumford Harris again witnessed a deed for James Goodrich, when he added to his

land holdings by purchasing forty six acres from William Crouse. A third deed of purchase for James Goodrich was witnessed by Claiborne and Mumford Harris when James Goodrich purchased land from John Brock on 25 September 1810. This land joined Phillip Hornburger's southeast corner on Wells



Creek. James Goodrich's daughter, Rebecca, married Isaac Hill. Two of James Goodrich's children married children of Claiborne Harris. George Jackson Goodrich married Nancy Harris and a daughter, whose name is not presently known, married Robert Park Harris. James Goodrich died in 1824 leaving his will written in 1818 and witnessed by Dorrel Young Harris and Robert Park Harris, two of Claiborne Harris' sons. At the estate sale of James Goodrich, Claiborne Harris purchased one gray horse for \$77.00.

It has been said that James Goodrich was a Baptist preacher and that he and a Mr. Mills began having "camp meetings" in the Yellow Creek area about 1810. This was about the time the Methodists organized churches in Stewart County and held camp meetings on Wells and Lick Creeks. Claiborne's son, Mumford, began preaching about that time also. He was admitted to the first Tennessee Conference of the Methodist Church held in Sumner County, Tennessee, on 1 November 1812. He was later assigned to Powell's Valley and the Elk River Charge and was admitted to full connection on 29 September 1814. His certificate signed by Bishop McKendree on 5 October 1814 is one of

the prized possessions of the author of this article. Another prized possession is Rev Harris' Bible in which is inscribed "Mumford Monroe Harris died 27 April 1815 in the 28th year of his life." The Bible, of very small print, along with some of his sermons is slipped into a cloth pouch. The Methodist Church Archives does not include an obituary for Mumford Monroe Harris in its obituary collection because he died before he had finished serving the two year probation period.

On 2 July 1827, Claiborne Harris of Dickson County, Tennessee, empowered his son, Stephen Harris, also of Dickson County, to act as his agent to receive money or anything of value due him. The Power of Attorney was registered in Fayette County, Tennessee, indicating that Claiborne Harris had business dealings there. Whether or not he actually moved to Fayette County is not known. He died in 1833 without a will and there are lawsuits in Fayette County against Stephen Harris, administrator of his estate. He was still alive on 20 May 1832, for on that date, Claiborne Harris, Jr. mortgaged to his father eight head of horses, two yoke of work steers, ten head of cattle and fifteen or twenty hogs for the sum of \$450.00.

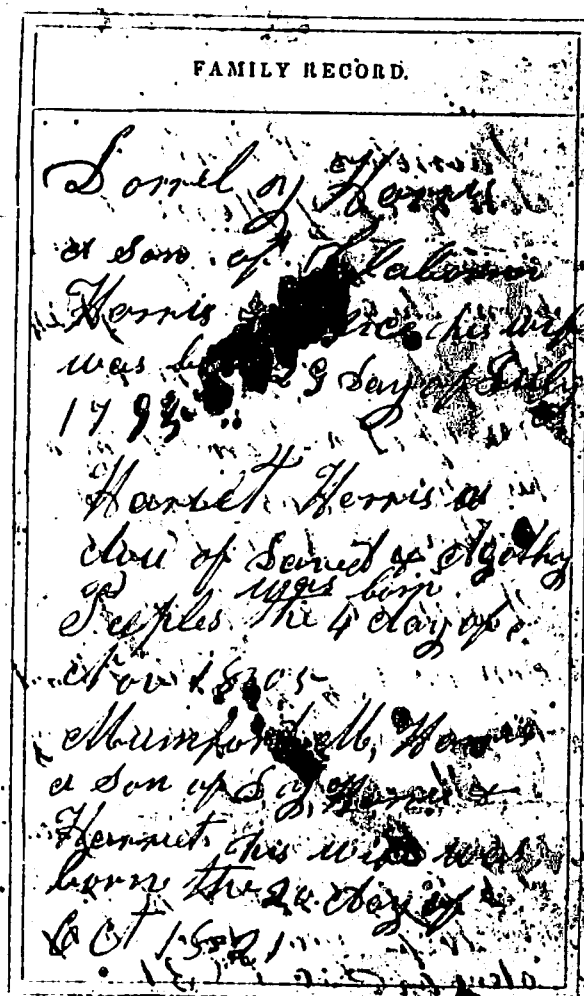
Claiborne Harris, Sr. was born circa 1760 and died in 1833. He married Alice Young Hill, who is believed to have been a daughter of Henry Hill of Darlington District, South Carolina. She is believed to have died before 1820. Their children were:

- i. Mumford Monroe Harris, born 1786-87; died 1815.
- ii. James Harris, born 1785-89; died before 1839.
- iii. Stephen Harris, born ca 1793; died 1854; never married.
- iv. Dorrel Young Harris, born ca 1795; died 1854; married Harriet Peeples
- v. Louisa Harris, born 1794-1802; married a Mr. Birthright; moved to Cass Co., TX before 1854.
- vi. Claiborne Harris, born ca 1796; died after 1854; married Diana Boone.
- vii. Wesley Harris.
- viii. Robert Park Harris, born ca 1804; married (1) Miss Goodrich (2) Winney _____
- ix. Nancy D. Harris, born ca 1807; married George J. Goodrich.
- x. Samuel Harris, born 1810-1820.
- xi. Mary Y. Harris, born 1810-1820; married John D. Wimberly; lived in Hernando, MS.

- xii. Hampton Harris, born 1810-1820; married a Dean.

James Harris, son of Claiborne Harris, Sr., of Hickman County, Tennessee, deeded a slave named Sandy to Diana Harris in 1827, for the use of Alice Jane Harris. James Harris married Elizabeth Stanfield in 1811 in Maury County, Tennessee. Their children were:

- i. Mary S. Harris, born ca 1812; married William Bryant and moved to Cass Co., Texas.
- ii. John O. Harris, born ca 1815; married Onez Allen in 1840.
- iii. Claiborne Harris, born ca 1819; died March 1854.
- iv. Sarah Harris, born ca 1820's; died before 1854; married Erasmus Ellis.
- v. Stephen J. Harris, born ca 1821; married Eliza Andrews in 1853.



- vi. Elizabeth J. Harris, born ca 1824; married Col. Alfred Dumm in 1845.
- vii. Margaret R. Harris, born ca 1831; died before 1854.
- viii. James Douglas Harris, born ca 1833; died after 1854; married Martha McRae.

Claiborne Harris, Jr., son of Claiborne Harris, Sr. and Alice Young Hill Harris, appears to have been prone to financial difficulty. In June 1832, he mortgaged his crop to Samuel Dickens. In 1835, he pled guilty and paid his fine for an assault and battery charge. Afterwards, in 1837, he moved with the rest of his family into Marshall County, Mississippi. Claiborne Harris, Jr. married Diana Boone in West Feliciana Parrish Louisiana sometime before 1824. In early 1825, an affidavit was recorded in Louisiana stating that Diana's slaves, William, Aaron and Jim, could not be sold to pay Claiborne, Jr.'s debts. These slaves must have come from Diana Boone's family. Diana Boone Harris also received from her family slaves named Tyrone, Charity, Fanny, Matilda, Milly, Norman, Jinny, Dilly and Louisa (girls) and John (a boy); Maryl and John were nearly grown.

Claiborne Harris, Jr. and Diana Boone Harris deeded slaves to their four children in 1834. (1) Alice Jane Harris received Harriet, a child of Charity, aged 8 years and Katherine, a child of Charity, aged 5 years. She also received Charity and Charlet (or Charles), a child of Fanny, aged 5 years. (2) Eunice Harris received Wells, aged 13 years, Martha, aged 7 years and a child of Fanny, and Susan, aged one month, a child of Jinny. (3) Philander Harris received Kathy, aged 6 years and David, aged 4 years, both children of Milly. (4) Diana Harris received Louis, a child of Milly, aged 1 year and Malinda, a child of Ginny, aged 3 years.

Claiborne, Jr. and Diana Boone Harris were parents of the following children:

- i. Alice Jane Harris.
- ii. Eunice Harris
- iii. Philander Harris
- iv. Diana Harris

There may have been others.

On 11 July 1829. Robert Park Harris, son of Claiborne Harris, Sr. and Alice Young Hill Harris, deeded to Eunice

L. Harris, a negro boy about 9 years old. Nothing further is known of this family.

Three of Claiborne, Sr. and Alice Young Hill Harris' sons, Claiborne, Jr., Dorrel Young and Stephen, served in the War of 1812. Stephen joined the group that formed in Franklin, Tennessee, and marched over land to Natchez, Mississippi, under John Coffee. The march began on 19 January 1813 and on February 16th, the group united with General Andrew Jackson's other two regiments. After a month of idleness, General Jackson led his force back to Nashville.

Among Captain Molton's (sometimes spelled Moulton) Troop 2 consisting of fifty one men, were Yellow Creek residents Hugh Dickson, Randolph Harris, Stephen Harris, Isaac Hill and others. In Captain Bradley's Troup 10 of sixty-six men were John and William Bryant and John Young, also of the Yellow Creek area.

In 1819, Dorrel Young Harris, son of Claiborne Harris, Sr. and Alice Young Hill Harris, married Harriet Peeples, daughter of David and Agatha Peeples. The Peeples family had moved to the Yellow Creek area from Green County, Georgia, about 1801. David Peeples and his son, Nathan, owned an ordinary (an inn) in Stewart County. His son Nathan and son-in-law Haydon E. Wells owned a newspaper in Clarksville, Tennessee. Nathan Peeples was appointed overseer of the road near him on 22 July 1817 and Claiborne Harris was designated as one of "the hands" to help him. David Peeples died in September 1816 and his wife, Agatha, died in March 1817, leaving minor children Harriet, Burrell and Samuel, who required a guardian. Harriet's brother-in-law Haydon E. Wells was appointed to serve as her guardian and furnished a bond of \$9,000.00, secured by her brother Nathan Peeples, along with Claiborne Harris, Israel Robinson and James Miller. Claiborne Harris, Sr. and George Ury were appointed to appraise the twenty-three slaves of David Peeples, deceased, which they valued at \$7,500.00. Harriet inherited four of her father's slaves - Luke, Liga, Cheto and Nad (Ned) - valued at \$1,500.00.

On 24 November 1839, Harriet Peeples Harris sold land to John Kilney in Marshall County, Mississippi. On 12 February 1840, D. Y. Harris executed a deed of trust to Stephen Harris in Holly Springs, Mississippi, for the benefit of George D. Cain, son of Sally Harris Cain. Items included in the deed of trust were sixteen head of cattle, a

yoke of oxen, seventy head of hogs and other personal property.

Harriet Peeples Harris was found on the 1860 U. S. Census in Monroe County, Arkansas with a personal estate valued at \$10,000.00. Included as members of the household were her sons Thornton Peeples Harris, Dorrel Young Harris, Thomas Wesley Harris, William Harris and Nathan Burrel Harris. Living on the adjoining farm was her son Stephen Claiborne Harris. Later, Harriet Peeples Harris and her family joined her brother Thornton Peeples in Illinois. She returned to Arkansas in 1865 via the Mississippi River to the Saint Francis River and thus to Forrest city, Arkansas.

An unconfirmed list of slaves owned by Dorrel Young Harris and Harriet Peeples Harris included: Lettiz, born August 1819; Manurva, daughter of Lettiz, born 19 August 1836; Newburn, son of Lettiz, born 22 February 1839; Liddy, daughter of Lettiz, born June 1841; Jack, son of Lettiz, born 8 June 1846; Charles, son of Lettiz, born 24 October 1847; Lew Howard, son of Lettiz, born 24 June 1849; Margaret Ann, daughter of Manurva, born 29 June 1851; Josephus, son of Lettiz, born 1857.

Dorrel Young Harris was probably born in Anson County, North Carolina, ca 1795. He and his wife, Harriet Peeples Harris were the parents of the following children:

- i. 1st child stillborn.
- ii. Mumford Monroe Harris, born 20 October 1821; died 17 Dec. 1852; married Eliza F. Hoke.
- iii. Thornton Peeples Harris, born 9 May 1824; married Mary E. Brooks on 9 May 1861.
- iv. Stephen Claiborne Harris, born 15 July 1826; died October 1876; married (1) Martha Ann Sorrels; married (2) Mary Jane Haynie.
- v. Samuel "Dock" Harris, born 8 March 1829; died March 1836.
- vi. Allis Elizabeth Ann Harris, born 19 Dec. 1831; married James A. Barbee in June 1858.
- vii. Dorrel Young Harris, born 22 May 1834.
- viii. Harriet Louisa Hampton Harris, born 18 October 1837; died October 1853.
- ix. Thomas Wesley Harris, born 7 September 1840; died January 1867.
- x. James Hill Harris, born 19 July 1843; died February 1844.
- xi. William Robert Park Harris, born 22 February 1845.

- xii. Nathan Burrel Harris, born 19 May 1851; died July 1933; married Mary J. Haynie in June 1879.

Dorrel Young Harris, Jr. was born in Somerville, Fayette County, Tennessee, on 22 May 1834. He married Louisa Jane Brooks from Clarendon, Arkansas, who died in February 1864 when her son, Stephen was only four months old. Dorrel Young Harris, Jr. and Louisa Jane Brooks Harris were the parents of two sons:

- i. Mumford Monroe Harris, born 1861; died 1862.
- ii. Stephen Peeples Harris, born 29 October 1863; died July 1920



Alice E. Bufford Harris (Eudora Alice was her correct name)
Dorrel Young Harris, grandparents of Sara Andrews

In September 1866, Dorrel Young Harris, Jr. married Eudora Alice Bufford of Mt. Pleasant, Mississippi. She was a daughter of Samuel Bufford, who had brought his family by barge down the river and set up a leather shop in Collierville, Tennessee (near Memphis). Dorrel Young

Harris, Jr. and Eudora Alice Bufford Harris were parents of the following children:

- iii. Dorrel Young Harris, III, born 1867; died 1947.
- iv. Sallie Kate Harris, born 1869; died 1950.
- v. Maggie Lee Harris, born 1872; died 1959.
- vi. Eula Mae Harris, born 1877; died 1881.
- vii. Samuel Hubert Harris, born 1883; died 1963.

The Confederate States

I, John B. Moore, hereby certify that I have this day destroyed four (4) bales of cotton of the overage weight of five (500) hundred pounds belonging to D. Y. Harris of Monroe County State of Arkansas done by order of Gen. Beauregard of date of May 3d 1862 and Maj. Gen. Heindman of May 4th 1862 and by order of A. W. Johnson[,] Colonel Commanding Eastern Arkansas this June 23rd 1862.

/s/ John B. Cocke
Agent for Monroe
County Arkansas.

The confederate states
I John B. Moore hereby certify
that I have this day destroyed
four (4) bales of
Cotton of the overage weight
of five hundred pounds
belonging to D. Y. Harris
of Monroe County State of Arkansas
was done by order of Gen. Beauregard
of date of May 3d 1862 and Maj. Gen.
Heindman of May 4th 1862 and by order of A. W.
Johnson Colonel Commanding Eastern Arkansas this
June 23rd 1862
John B. Cocke
Agent for Monroe
County Arkansas

Sarah Andrews
1845 Mosley Ferry Road
Chapmansboro, TN 37035

Here's a contributor who isn't camera-shy.
Also lets the local paper run pictures of her
cooking.



The following records are transcribed from a photocopy of the family record pages contained in the David C. Greeson family Bible. The title page was not copied, it was either omitted or is missing. The photocopies were given to the transcriber by Mrs. Elmer (Pauline) Lutts of Lutts (Wayne County), Tennessee who is also a descendant of David C. Greeson.

DAVID C. GREESON BIBLE RECORD

transcribed by Sandra Tedford

FAMILY RECORD

MARRIAGES

David C. Greeson and Sarah Ann Elizabeth Berry were married August 14th 1859 in Wayne County, Tennessee.

Margaret R. E. [Emma] Greeson was born March 28th 1862.

John E. [Elderson] Greeson was born Aug. 24th 1863.

Sarah E. [Elizabeth] Greeson was born April the 16th 1865.

[These three children were from the 3rd marriage of David C. Greeson]

BIRTHS

David C. Greeson. Born March 9th 1822 in Bedford Co. Tennessee.

Sarah Ann Elizabeth Greeson. Born July 19th 1836 in Hardin Co., Tennessee.

Lucinda Annabel Greeson. Born Aug. 12th 1844 in Hardin Co., Tenn.

Catharine Elizabeth Greeson. Born November 11, 1846 in Hardin Co., Tenn.

Henry Clay Greeson, Born May 21st 1848 in Hardin Co., Tennessee

Mary Lucinda Greeson, Born April 6th 1850 in Hardin Co., Tennessee.

[Lucinda Annabel, Catharine Elizabeth, Henry Clay, Mary Lucinda and Neill McFadgen were all children of David Greeson and his first wife, Flora Ann McFadgen Greeson.]

Louisa Jane Greeson, Born March 2nd 1854 in Hardin Co., Tennessee.

Flora Ann Greeson, Born August 24th 1855 in Hardin Co., Tennessee.

[Louisa Jane and Flora Ann Greeson were the children of David C. Greeson and his second wife Sarah Ann Gifford Greeson.]

[At the bottom of the page the corner has been torn off and the name of the next child does not appear. However, from other family records we are able to reconstruct this name. Only the month and date of birth appear on the Bible record and the words "County, Tennessee." We will assume that he also was born in Hardin County. The name of this child is as follows: (William David) Greeson, Born Aug. 24th (1860 in Hardin) County, Tennessee.]

DEATHS

Flora Ann Greeson departed this life February 23rd 1852 in Hardin County, Tennessee. [First wife of David C. Greeson.]

Sarah Ann Greeson departed this life, December 14th 1857 in Hardin Co., Tenn. [Second wife of David C. Greeson.]

Lucinda Annabel Greeson departed this life Nov. 23rd 1844.

MISCELLANEOUS

Martin C. [Cook] Greeson was born Nov. the 3rd 1866.
Laura C. Greeson was born July the 16 1868.
Nancy C. [Caroline] Greeson was born Oct. the 8 1872.
Dorothy E. [Ellen] Greeson born July 3 1874.

[William David, Margaret R. E., John E., Sarah E., Martin C., Laura C., Nancy C. and Dorothy E. Greeson were all children of David C. and Sarah Ann Elizabeth Berry Greeson. Third wife of David C. Greeson.]

Transcribed by Sandra Tedford, 400 Sherry Lane, Farmersville, TX 75442. All items in brackets are notes by the the compiler and are not in the Bible record itself. These have been added to help the researcher understand the outline of these families and their several children.

Ask Us

From Wanda Killgore, Allardt, TN

Here's the situation: A father dies in Maury County leaving minor children. The mother is still living. A guardian is appointed for the children. The question is: How is the guardian determined? Is the guardian related to the family? Or is he a random figure appointed by the courts? I don't know whether I should be investigating the family of the guardian to find a relationship or if I am wasting my time studying him.

We asked Byron Sistler to respond to this question. He tells us:

Legally guardians were and are appointed by courts. The court had the right to appoint whom-ever it pleased, and this might well happen if the child or incompetent had no friends or family in the vicinity. But in 19th century rural America families and friends customarily lived in close proximity to each other, so it would be a rare orphan indeed who did not have someone to look after his well being.

As a consequence the courts usually appointed as guardian someone who was a family member or close to the family. An example of how thorough this custom was is the orphan girl who married a man who was of age; immediately after the marriage the husband would be named guardian in place of the previous guardian.

If a child whose mother had died came into an inheritance, perhaps through his maternal grandfather, it was customary for the child's father to be named guardian for the purpose of handling the child's interest in the estate.

Simply put, then, it behooves the researcher to dig into the genealogy of the family of the guardian.

TIME LINE: ANN (SNELL) KING BLACKMAN MCCLENDON
Married 1st: Henry King; 2nd: Stephen Blackman; 3rd: Simon McClendon

by Jane Grey Buchanan

- 8 Feb. 1737**—Birth in Bertie Co., NC. Parents: Roger & Ann (Pickering) Snell (Reference for this and starred items (*) that follow is a treatise on the Blackman Community in Rutherford Co., Tenn., written by Robert William Baskin, 6 Jan. 1953. Data are "verbatim copies from King records now in possession of Mrs. Paul Grigg, Murfreesboro, Tenn." Includes information "Taken from an old paper in Charles Hays' possession and being the papers of Ann McClendon. Signed: Jas. M. King, 14th June 1842." Reference for items marked with (+) are from data copied by Jeanette Moore King, 19 July 1910, Murfreesboro, Tenn. from list signed by James Blackman, 9 July 1785; also (1953) in possession of Mrs. Grigg, above.)
- ca 1752/1753**—Marriage to Henry King, son of Michael King
- 10. Dec. 1753**—Birth of son, Charles King* (Married Penelope Whitfield. Ch: Stephen, William Whitfield, Eleanor, Lucretia, Penelope, Henry, Mary, Charles, Jr. (from The Lees and Kings of NC, Wilson & Glover, hereafter referred to as L&K of NC)
- 1 Feb. 1756**—Birth of son, Stephen King* (Married Amy Oates, L&K of NC)
- 30 Sept. 1758**—Birth of son, Henry King, Jr.* (Married Jeanette Moore. Ch: Henry King & James Moore King, b. 18 Nov. 1792, Sampson Co., NC; m. Martha Batey, 29 Nov. 1821, Rutherford Co., TN; d. 15 Apr. 1877)
- 27 Oct. 1758**—Father, Roger Snell, wrote will in Duplin Co., NC. "I give to my well beloved Daughter Ann King one Negro boy Named Ned to Hir and hir heirs." (Original will, NC State Archives, Raleigh)
- 11 Apr. 1759**—Roger Snell's will proven in Duplin Co. Court; recorded in the Secretary of State's office.
- 26 Feb. 1761**—Birth of daughter, Mary King* (She married Mr. Howell; died 1824. from L&K of NC)
- 19 Nov. 1762**—Henry King wrote will; named wife Ann executrix (Duplin Co., NC WB A:261-262)
- 24 Feb. 1764**—Alexander McCulloch of Halifax Co. to Ann King. 12 pounds for 100A on the NE branch of Black River. Wit: W. D. Bois, Felix Kenan. Rec. 4 Apr. 1768 (Sampson Co., NC DB 1:41)
- 7/10 Dec. 1766**—Marriage to Stephen Blackman, Duplin Co., NC.; Bd.: Jos. Blackman; Wit.: Michael King, Wm. Ball. (Duplin Co. Marr. Bonds)
- 5 Jan 1768**—Birth of son, James Blackman+ (marr. Elizabeth Ann Oates) 23 June 1770 -- Birth of son, John Blackman+ (marr. 1st, Nancy Hays; marr. 2nd, Elizabeth Herring, widow)
- 25 Nov. 1772**—Birth of son, Bennett Blackman+ (marr. Susannah Hays)
- 18 July 1775**—Birth of daughter, Ann Blackman+ (marr. Charles Hays)
- 11 Mar. 1776**—Death of husband, Stephen Blackman+ (His will was destroyed in the Dobbs Co., NC court house fire.)
- 24 June 1779** —Warrant No. 1998, Duplin Co., NC Land Grant # 269 (issued 1 Apr. 1780) entered for Anne Blackman, Entry No. 371, LG Bk. No. 41, pg. 116. 200A in Duplin Co. on the head of the six Runs and on both sides of a Branch called the Glade of Reeds, at a Red Oak Luke Thomas's Corner of the land he lives on ... stake on the Orphans line, etc.;

Surveyed 26 Aug. 1779, Rice Blackman & Charles King — Chain bearers

28 Aug. 1781—Deed: Ann Blackman from Absolom Kincy. 125A for 70 pounds “beg. ...on the E. side of the six Runs in the side of the Swamp at the mouth of Brockenborough branch and Runs up the Swamp. Deed mentions Stephen Blackman and Mr. McCulloh’s line. Wit: Charles King, William Darden (Sampson/Duplin Co., NC DB 7:276)

25 July 1783—Warrant No. 2955, Duplin Co., NC Land Grant # 1110 (issued 11 July 1788) entered for Ann Blackman, Entry No. 967, LG Bk. No. 66, pg. 360. 68A (warrant says 100A) on East side of the Six runs, joining the Orphans’ Line; “Beg. at two red Oaks Luke Thomas’s Corner and runs North 48 degrees East Thomas’s line 86 poles to pine in Stephen Blackman’s line then North 60 degrees West 100 poles to McCulloh’s line, S. 30 degrees West 64 poles to a black jack in Herrins line, S. 55 degrees E. 62 poles to a stake, S. 30 degrees E. along Glebe line 80 poles to stake to beg.... Surveyed 8 July 1783; Luke Thomas & Stephen King —Chain bearers

13 Aug. 1787 —Deed of Gift: Simon McLendon and wife Ann McLendon to James, John, Bennet, and Ann Blackman, two tracts of land. 1st tract of 120A “beg. on E. side of six Runs in the side of the swamp at the mouth of Brackinges Branch and Runs up the swamp..” Deed mentions Stephen Blackman and Mr. McCulloch. Land was “granted

by patent to Abraham Herring dated 20 Oct. 1767.” 2nd tract of 200A “beg. at ... Luke Thomas’s Corner of the land he now lives on.” Mentions “the Glade of Reeds” and the plantation. Land was “granted to the sd. Ann McLendon by pattent Bearing date 1 Apr. 1780.” Wit: Rice Blackman, Stephen King. (Sampson Co., NC DB 8:203)

25 Mar. 1796 —“Simon McClendon to the heirs of wife. I, Simon McClendon, doth acknowledge, I have in my possession four negroes, Nel, Glenn, David, Matthew, and two beds and furniture of the estate of Stephen Blackman deceased, which I will deliver to James, John, Bennett, and Ann Blackman or either of them when called for at the death of my wife, Ann McClendon.” Signed: Simon McClendon. Wit: Thomas King, Ollin Mobley. Rec.: 16 Jan. 1798 (Sampson Co., NC DB 10:192)

21 Jan. 1809—Simon McLendon wrote will. Gave wife Ann slaves and household items. Exec.: Charles Hays & James Hamilton. Wit: Gabriel Vest, Jas. Hamilton. Prvd. April term 1809. Rec.: 15 May 1809 (Dav.Co., Tenn. WB 4:44)

16 May 1809—“Inventory of estate of Simon McLendon, dec’d returned unto April term 1809.” (Ibid., p. 45).

14 Dec. 1809—Inventory of sale of estate of Simon McLendon, dec’d. Long list of names, but “Ann McLendon” not there. (Ibid.)

Renew your membership today! Dues \$18 paid by June 30th
Use form included with this issue.

1994 January SHOW AND TELL Meeting

This turned out to be a lot of fun and we'll do it again. The turnout was relatively light due to frigid weather but it was a lively group. Wish there were room to run a lot more about the items brought but this will give you an idea.



Pictured at left is Keith Coleman holding underwater wood bearing from a water mill [grist mill].

Mr. Coleman won the *stump everybody there* contest. Now, we thought this was just a bit of a fraud since he didn't bring the entire water wheel. On the other hand he was a wonderful sport and played our own version of twenty questions to satisfy the requirements. The prize was a free membership for next year.

While wandering around examining the exhibits, some quite elaborate, some quite rare, we wondered about a homely basket just sitting there like the proverbial wallflower. After reaching in to examine the "card" included we decided not one other item there could equal this in charm.



Left: Velma Evans (Nelle) holding her egg basket.

Dear Nelle:

When you were a very little girl you sometimes went to "Grandpapa & Grandmama's" with us, and you used to follow Granpapa when he gathered the eggs. This basket is the one he always used to put the eggs in. We thought you would enjoy having it.

One day when you were following GrandPapa and feeling under each hen on the nest as he did to see if there was an egg the old hen pecked you. You were so surprised (and hurt) you said "What did she do that for?" We love you very much. "Aunt Mabel & Uncle Wallace"



Dear Nelle;

When you were a very little girl you sometimes ^{went} to "Grandpapa + Grandmama's" with us, and you used to follow Grandpapa when he gathered the eggs. This basket is the one he always used to put the eggs in. We thought you would enjoy having it.

One day when you were following Grandpapa and feeling under each hen on the nest as he did to see if there was an egg the old hen pecked you - you were so surprised (and hurt) you said "What did she do that for?"

I love you very much. "Aunt Mabel + Uncle Wallace" -

Accompanying the basket a number of years ago was this note from Mr. & Mrs. Wallace Roberts of Knoxville. Mrs. [Mabel Hamilton] Roberts died 1993, age 93.

PETITION OF SARAH CHEATHAM (COL.)

To the Honr Nathaniel Baxter Judge etc
of the Circuit Court for Williamson County
in the State of Tennessee

The petition of Sarah
Cheatham a free person of Colour of said
County and State respectfully represents unto
your Honor that she desires to go into
slavery that she has chosen one Francis
M. Lavender of Williamson County to be
her owner. The petition would also represent
that she is Eighteen years of age praying
your Honor to grant this petition as in
duty bound she will ever pray

Witness
Thos. N. Perbus
J. S. Park

Sarah ^{her} Cheatham
mark

Petition, ex parte. Filed 15 Nov. 1858. The original is in Preservation of Records, Franklin, TN.

To the Honorable Nathan Baxter, Judge of the Circuit Court for Williamson County in the State of Tennessee.

The petition of Sarah Cheatham a free person of Colour of the same County and State respectfully represent unto your Honour that she desires to go into slavery. That she has chosen one Francis M. Lavender of Williamson County to be her owner. This petition would also represent that she is Eighteen years of age praying Your Honour to grant this petition as in duty bound she will every pray.

Sarah (her X mark) Cheatham

Witness
Thos. N. Perbus
J. S. Park

WILL OF ANDREW HENDERSON

In the matter of the estate of }
of Andrew Henderson dec'd }

This day came into Court **Matthew Henderson**, Exr. of the Last Will and Testament of **Andrew Henderson** dec'd, and presented a release of **Thomas Henderson**, devisee of said estate, and asked it be made a matter of record:

I, **Thomas Henderson** of Henderland farm in the District of Otepopo in the Province of Otago and Colony of New Zealand, farmer, send greeting - Whereas, **Andrew Henderson**, late of Nashville in Tennessee, and of New York ... I have full confidence in my brother, **Matthew**, and to relieve him of trouble with the administration of my deceased brothers estate ... do hereby signify my consent to the Probate of my deceased brothers will being granted both at Nashville and New York. 18 Oct. 1873 **Thomas Henderson**

T. W. Hislop, Solicitor Odinarie
Michl Thos Sprate, Clerk to **T. W. Hislop**

I, **Thomas William Hislop** of Oamaru in the Province of Otago and Colony of New Zealand, a Barrister and Solicitor of the Supreme Court of New Zealand,

1. I do declare that I was present and did see **Thomas Henderson** sign and that the signature **Thomas Henderson** is of the proper handwriting.
2. There is no Notary Public or American Consul resident within Sixty miles of the residence of **Thomas Henderson**, nor within seventy five miles of Oamaru.

20 October 1873 **T. W. Hislop**

Before me **Jno. S. Wait** - Mayor of the town of Oamaru
—State of Tennessee Davidson County - County Court
Wednesday morning, July 28th 1875

In the matter of the Estate of **Andrew Henderson** dec'd}

...came to be heard before the Hon. **Jno. C. Ferriss**, Judge of the County Court of Davidson County, TN, upon the petition of **Matthew Henderson** ... **Matthew Henderson** was duly qualified and gave bond as executor, Nov. 24, 1873 [registered in Book 2, page 167] with **Alex. G. James**, **John R. & Wm Turner** and **D. F. Wilkin** as sureties, and it further appearing that **David Henderson**, **Margaret Brown** and **Thomas Henderson** - with petitioner, are the brothers and sister of said **Andrew Henderson**, deceased, and also the sole devisees under the Will. Friday morning, July 30, 1875 - Davidson County

[Min. Book 'O' - Davidson County, TN - pages 466-470]
abstracted by **Mary Sue Smith**

CRAIGHEAD (COL.) ADOPTION

Mary Jane(col)& Jno. Henry Craighead(col) }

Adopted by }

Fleming Higgins & Wife Nicey }

Your petitioners Flemming Higgins and Wife Nicey, (col) - they are citizens of Davidson County, Tenn: they have been married for 8 years; they have no children and are anxious to adopt two colored infants named Mary Jane & John Henry Craighead, aged respectively 7 & 5 years; as their own children and with the consent of their father John H. Craighead. Said children have no Mother, she haveing died some two years ago, and their father is unable to provide a support for them by reason of being a cripple and unable to do physical labor and having no female relative who would rear and educate them, is desirous of placing them under the care and charge of your petitioners. Your petitioners state they are the owners of a house and lot in the 13th Civil District and are well able to educate and maintain said children in a decent and respectable manner. Your petitioners pray they be permitted to adopt the said Mary Jane & John Henry as their own children; that their names be changed to Mary Jane and John Henry Higgins and that they be invested with capacity to inherit and succeed to petitioners estates as though they had been born to them in lawful wedlock. 25 Sept. 1875 Flemming (X) Higgins
(his mark)

[Min. Book 'O', Davidson County, TN, pp 557/558/559]

McCauley once said,

“People who take no pride in the noble achievements of remote ancestors, will never achieve anything worthy to be remembered with pride by remote descendants.” From the *Tennessean Magazine* dated Sunday, May 5, 1935, by way of Daisy Taylor (a copy of this magazine was part of her display at January meeting)

For the time being we are including this COMPUTER NEWSLETTER as a regular article in the quarterly. If enough interest is shown a separate newsletter will be published. Evaluation of products in articles or reviews is strictly the opinion of the author and does not constitute endorsement. Members are urged to submit news items, software reviews, product evaluations, comments, questions and suggestions to Computer Editor/ MTGS/PO Box 190625/ Nashville, TN 37219-0625

COMPUTER INTEREST GROUP NEWSLETTER

by William D. Jackson

What is the "Best" Genealogy Program?

Choosing a genealogy program is a matter of personal concern. You are dealing with your family history and having a genealogy program that will do what you want is very important. Do you plan to publish a book? Do you conduct research for others? Do you want to include photographs in your genealogy records? Do you want family tree charts, detailed printouts? Do you plan to exchange information with others, or submit family data for publication? How much data do you have and how many generations does it represent? How many heads of families, how many children? Are your records on notebook paper, file cards, in books, on audiotape, or computer data files? Do your plans call for extensive library research, correspondence, and travel? Keep in mind, the total cost of software, computer and printer can be a major investment. However, don't let the cost of genealogy software stop you. The right choice of software will enable you to get started now and will allow you to upgrade in the future should the need arise.

If you shopped around at Sam's, Wal-Mart, K-Mart or the Mall computer shops before buying your computer, you might have noticed Family Tree Maker or Family Origins on the shelf. Perhaps you purchased one of these genealogy software packages. Did you make the "best" choice?

Carla Ridenour, writing in the March April 1993 issue of *NGS/CIG Digest* expresses the view that

Ideally the very best program does everything the documentation claims it will do, plus everything you want it to do. While most programs qualify on the first count, all will eventually fall short on the second. The only real clue I can offer is that the very best programs all support GEDCOM.

George Archer, in the same issue of *NGS/CGS Digest*, lists three maxims regarding selection of genealogical software.

1. There is no "best" genealogy program; no two people do genealogy the same way.
2. The "best" program is the one that fills your needs.

3. Value in genealogical software is what works for you, not the price; you usually get more than you pay for; features never used on a computer that has more "horsepower" than you will ever use is wasted.

Users vary widely in their computer skills and experience with different genealogy programs. Surveys reflect a diversity of choice among users who respond at any given time. PAF is one of the most widely used even though Brother's Keeper, Family Tree Maker and Family Origins have been gaining in popularity. The majority of users are probably reporting on their experience with a single program. It is doubtful many of them ever used another program. Professional genealogists, researchers and those with computer experience probably tried several programs before making their choice.

Widespread use of Windows has complicated the situation even more. New programs for Windows or DOS are being advertised, older programs have announced up-grades for DOS and new versions for Windows. Many of these programs have similar features and will do an excellent job for most genealogists. Price is one of the major differences, but remember, the least expensive program may turn out to be an expensive mistake!

Most programs are GEDCOM supported, will print a wide range of charts and will work with all types of printers. Of course a dot matrix printer can print family tree charts that extend beyond a single page on fan-fold paper. Charts printed on Inkjet and laser printers are generally limited to a single sheet.

New programs for Windows and DOS updates have the capability of importing scanned pictures into their files so that you can include an ancestors photo along with genealogical data. If you are interested in publishing a family history or writing a book based on your genealogical research, ROOTS IV, or similar programs used by professional researchers and writers would be more desirable. Only a few choices of genealogical software are available at the present time for Apple/Macintosh computer owners. The most common programs are PAF, MacRoots, Reunion, and Family Roots.

What is GEDCOM?

GEDCOM is a way to move genealogical data between different software programs. The term GEDCOM stands for "GEnealogical Data COMMunication." Without GEDCOM each genealogy program and sometimes even new versions of the same program would have to provide a different conversion utility program for every program. The GEDCOM standard enables you to convert your own genealogy program files into a format that can be used by someone using a different program.

Each different genealogy program has its own unique way of storing its information in a database. GEDCOM allows software developers to incorporate a conversion utility into their own unique program that is compatible with all other genealogy programs that support the GEDCOM format. The GEDCOM standard specifies an alphabet, some rules on how letters of the alphabet are combined to form

words, and grammatical rules on how words are combined to form sentences, arranged in a way that is unambiguous and easy for computer programs to understand.

GEDCOM is sponsored by the Family History Department of the LDS Church. It was first proposed to the genealogical community in 1985, released in 1987, and revised in 1989 and 1991. The December 1991 draft revision proposes a major expansion which would include a source citation structure, user-defined events, user defined associations between people (for non-family relationships), and a more rigorous and thorough format specifications.

This information was obtained at the 1992 NGS Conference in the States from a presentation by William S. Harten, GEDCOM Coordinator for the Family History Department, LDS Church, 50 East North Temple Street, Salt Lake City, Utah 84150.

SOFTWARE REVIEWS

PAF, Brother's Keeper, Family Origins, Family Tree Maker. These four genealogical programs can be purchased for fifty dollars or less, and work with older 286 model PC's with at least 640K or more of RAM, MS-DOS version 2.11 or later and 2 disk drives (floppy or hard disk). All four programs are GEDCOM supported. GEDCOM was not included with earlier versions of Family Tree Maker but could be ordered as a utility for \$29.99. The latest version, 3.0, sells for \$45.95 and includes the GEDCOM utility. Each program offers technical support if you encounter problems.

PAF or Personal Ancestral File

- Probably the most widely used program
- Installation is simple and easy
- Documentation is excellent, manual provides a step by step process for each menu selection. Illustrations and examples make it easy to understand each menu option
- Help screens available at all levels
- Menu system includes a main menu with 10 sections Each sub-menu is broken down into additional categories
- Has a feature that will check spelling when a new entry for a name and or place is made. This is very useful
- Offers a split-screen display for comparison of records
- Corrects date entries into a standard form
- All surname entries are capitalized to avoid confusion with place names
- Must follow guidelines for acceptable words and abbreviations used in records
- Facts and Fun Menu includes a date calculator, Soundex Codes, genealogy songs and other useful items

However there are some shortcomings to be considered:

The menu system can be frustrating when making corrections or modifying numerous records in a large database. Having to go from one menu to another and then back to the main menu does not seem to be as user friendly as the menu system used by other programs.

Data entry forms include categories and space for information needed for ancestral file submission to The Church of Jesus Christ of Latter-Day Saints.

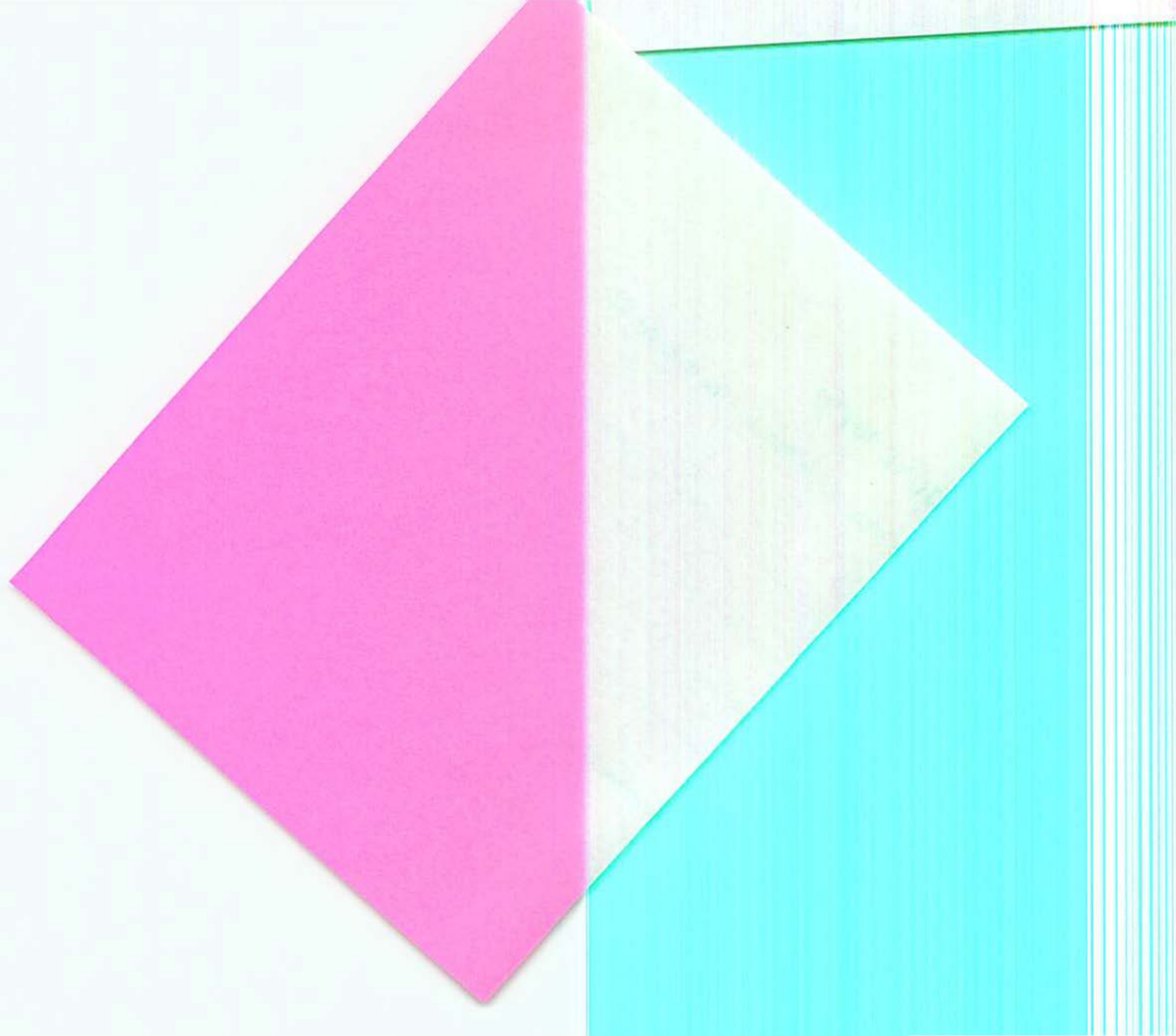
The notes menu is limited in regard to available data space in the family records data files. Notes stored this way cannot be accessed from outside the family records program. A word processor cannot be used to prepare bibliographic entries for sources or citations unless separate files are set up with an ID number assigned each individual.

JUNE 30TH!

the 30th. After that date the dues are \$21.

Tennessee Genealogical Society (MTGS).

Tennessee Genealogical Society
x 190625
x 37219-0625



Brother's Keeper

This program is widely available as a shareware program on computer bulletin boards, through local computer interest groups, and software distributors.

- Installation is simple and easy
- Documentation is adequate. Manual is functional, instructions are clear and easy to follow
- Help screen refers to manual, accessed from main menu
- Main menu shows all the routines and programs. Can use arrow keys, number or capitalized letter to select options
- Data entry form includes space for a reference number to locate a person or source
- A message line (7 lines 78 characters each)
- Text file of 120 lines for each person
- Source lines (3 lines for each date)
- Mailing address (6 lines 40 characters each)
- Will convert entries for dates into a standard format
- Allows for splitting off part of a database if you want to send information to another Brother's Keeper user

The major limitation or shortcoming of this program is probably the manual. The menu system is easy to use but the help screens involves looking up a topic in a manual devoid of detailed explanations and examples.

Family Origins

This program has continued to grow in popularity due to direct mail advertising and availability at computer stores and retail discounters.

- Installation is easy and simple
- Documentation is excellent. Manual is well illustrated and provides detailed step by step instructions -- Press F1 for help screens at all levels
- Features a pull down menu system with title bars at top and bottom of screen
- Opening menu screen is a family tree chart with the choice of either a three or five generation display
- Translates partial dates, dual years, and dates for an event into a standard format.
- Has an option for LDS (Mormon) ordinance entries
- Function keys for brief notes, a source, and longer notes. The long note file option allows for entry and editing up to 2000 lines of text about an individual or a marriage.

Family Origins does not appear to have any serious limitations or shortcomings, however a fill in the blanks approach to data entry can be limiting when entries exceed the available space.

Family Tree Maker

Another program readily available through mail order computer software sources, computer stores and retail discount stores.

- Installation is simple and easy
- Documentation is excellent. The manual provides detailed step by step instructions that are easy to follow. -- Extensive use of graphics with illustrations and examples
- Menu system resembles an index card file. Three cards are used for information about each person including life history, personal data with comments and medical records. A fourth card, used for notes, is a mini-word processor and can be used to enter up to five pages of text
- Title bar at bottom of screen used to access help screens, main menu, or cards for individuals and spouses -- Dates are converted into a standard format
- Wide choice of formats for printing charts. Includes a special ancestor tree with room provided in each box for photographs. Borders and box styles can be used to make customized charts suitable for framing

— Can print monthly calendars with birthdays or other events shown for each family member

Family Tree Maker does not appear to have any serious limitations or shortcomings.

Conclusions

Any one of these programs would satisfy the needs of most genealogists. The differences are noteworthy however, and serious thought should be given to long range objectives along with current needs.

For example, you have collected unproven or conflicting information about your ancestors and wish to qualify this information for each individual in your database. Inclusion of footnotes, citations, historical events or medical records can be difficult or impossible with PAF.

If you have an inkjet or laser printer and want beautiful charts, then Family Tree Maker is the obvious choice. Many genealogists have purchased this program because of its outstanding printouts.

Compatibility and formats of data files could be a major problem with all of these programs if you plan to use Word Perfect, Microsoft Word or other word processors to edit your genealogy data files.

Potential use of photographs in a family history requires a program that will accept scanner files. None of these programs have that option. Family Tree Maker does print a frame around space for photographs that are attached to the printed chart.

Other programs such as Roots IV should be considered if publishing a book is one of your goals or if you want the ability to scan photographs of favorite relatives into your genealogy software files.

**Next Issue: New Genealogy Software and Upgrades
 Sources**

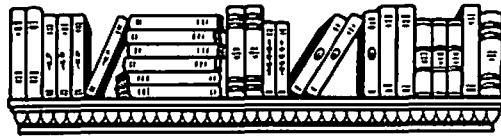
For a good laugh on the subject of computers it's hard to beat a *Wall Street Journal* article of March 1, 1994, Section B, p. 1: "Befuddled PC Users Flood Help Lines, And No Question Seems to Be Too Basic."
[Byline Jim Carlton] We are shamelessly lifting some chuckles to pass on.

...with computer sales to homes exploding as new "multimedia" functions gain mass appeal, PC makers say that as many as 70% of their calls come from rank novices....questions are often so basic that they could have been answered by opening the manual that comes with every machine. One woman called to ask how to install batteries in her laptop. When told the directions were on the first page of the manual the woman replied angrily, "I just paid \$2,000 for this damn thing, and I'm not going to read a book."...So many people have called Compaq to ask where the "any" key is when "Press Any Key" flashes on the screen that [Compaq] is considering changing the command to "Press Return Key."

There's lots more, but our personal favorite is the customer

... having trouble reading word-processing files from his old diskettes. After...asked what else was being done with the diskette the customer's response: "I put a label on the diskette, roll it into the typewriter...."

To feel ever so much smarter, look up the paper and read the whole piece.



BOOK REVIEWS

by Shirley Wilson

1820 North Carolina Federal Census, 2nd Edition by Dorothy Williams Potter. Hardbound 8 1/2 x 11, 516 pp., copyright 1974. Order from Dorothy Williams Potter, 200 Sheffield Place, Nashville, Tennessee 37215-3235 \$49.75 plus \$3.50 postage and handling.

Potter has done an excellent job in preparing this second edition. It lists the census enumeration for over 78,000 heads of household. It includes all fifty-six counties for which enumerations were preserved and compensates for the lost census records of Wake and Franklin counties by including their tax lists.

It is arranged alphabetically by the name of the head of the household. Even if you already have an 1820 North Carolina census index, you will want to purchase this updated version for your collection because it includes the numbers of males, females and slaves in the households.

* * *

The Family Chronicles - Book One: The Luther Family and Related Lines by Joseph Luther. Spiral bound, 8 1/2 x 11, 100 pp., copyright 1993. Order from Joseph Neal Luther, 2545 Lafayette Avenue, Lincoln, Nebraska 68502. \$25.00 including postage.

Luther has introduced this book as Part One of a four part series. It traces the Luther family of Frederick County, Maryland through Randolph County, North Carolina to Dickson County, Tennessee. Descendants settled in Kerr County, Texas. Information on the allied families of Thompson, Pegram, Scott, Gentry, Carr, Bowden, and Anderson are included.

* * *

The Family Chronicles - Book Two: The Jordan Family and Related Lines by Joseph Luther. Spiral bound, 8 1/2 x 11, 95 pp., copyright 1993. Order from Joseph Neal Luther, address above. \$20.00 including postage.

This is Part Two of a four part series with books on the Nealand Ramsey families to be forthcoming. This volume traces the Jordan family of Surry County, Virginia to Cheatham County, Tennessee. There is information on the allied families of Brown, Allison, Woodward, Shelton, Pegram, Harrison, Greer, Harris, Burnette, Walton, Exum, Cato and the Henry and William Browne families of Surry County, Virginia.

Both of these books include some excellent maps to pinpoint land locations as well as references. Neither book has an index, an addition which would be most welcome. Let's hope a master index is planned for the entire series.

* * *

Beginning second volume (1978) unpublished Cemetery Records of Wilson County

SELECTED CEMETERIES IN WILSON COUNTY, TENNESSEE

by Thomas E. Partlow

ALSUP CEMETERY

(Located 1/4 mile north of Vesta Road and one mile west of U. S. 231 on farm of Glendon Johns)

1. Joseph Alsup, died 17 September 1860. 73 years, 11 months, 20 days.
 2. Isabella, died 18 November 1866. Age about 75 years. Wife of Joseph Alsup.
 3. Susan Darthula Alsup, born 19 June 1830; died 31 October 1847.
 4. Reverend Asaph H. Alsup, born 1827; died 1905.
 5. Nannie M. Alsup, born 1830; died 1905.
 6. Lafayette Alsup, born 18 October 1825; died 7 June 1860.
-

CLEMMONS CEMETERY

(Located about two and a half miles northwest of Cainsville on the St. John Lane)

1. Alfred Clemmons, born 9 November 1804; died 19 February 1862.
 2. Martha Clemmons, born 5 September 1805; died 4 January 1867. Wife of Alfred Clemmons.
 3. Alford W. Clemmons, born 7 October 1860; died 23 August 1862.
 4. Albert H. Clemmons, born 13 December 1840; died 7 January 1862.
 5. Tolbert F. Clemmons, born 8 June 1838; died 3 January 1863.
 6. Albert Clemmons, born 24 June 1860; died 30 January 1867.
 7. Grave.
 8. Grave.
-

DILLON-JENNINGS CEMETERY

(Located about two miles southeast of Greenvale on the Dillon farm)

1. Eula Dillon, born 14 Jun 1879; buried in Evergreen Cemetery in Murfreesboro.
 2. Madge Dillon, born 11 February 1876; died 1 January 1948.
 3. William Harrison Dillon, born 8 September 1835; died 22 May 1879.
 4. Nancy A. Dillon, born 4 June 1847; died 22 July 1919. The inscription reads, "Gone to rest."
 5. John Favor Jennings, born 14 October 1856; died 26 February 1933. The inscription reads, "Gone but not forgotten."
 6. Kitty Elizabeth Dillon Jennings, born 9 January 1860; died 22 May 1921. Age 61 years, 4 months, and 12 days.
 7. Silous Jennings, born 27 March 1878; died 31 August 1893. Age 15 years, 5 months, and 4 days. The inscription reads, "Budded on earth to bloom in heaven."
 8. Horace Jennings, born 27 December 1881; died 1 November 1900. The inscription reads, "Sleep on dear Horace and take thy rest, God called thee home. He thought it best."
 9. Callie Jennings, born 10 August 1892; died 11 August 1892. The inscription reads, "Gone to be an angel." Infant son of J. F. Jennings and K. E. Jennings.
 10. Nannie Quarles, born 1891; died 1898. Daughter of Harry Dillon Quarles.
-

FAIRVIEW CEMETERY
(Norene, Tennessee)

1. Pattie Brown Hawks, born 1921; died 31 March 1977.
2. Robert C. Hawks, born 5 May 1913; died .
3. Gentry D. Mears, born 20 December 1954; died 2 December 1972.
4. Marie R. Vantrease, born 21 May 1886; died 3 December 1915.
5. Marion E. Vantrease, born 8 June 1884; died 20 February 1961.
6. Anna Bell Williams, born 1883; died .
7. Cyrus Williams, born 1877; died 1948.
8. Priscilla Whiteaker, born 22 June 1891; died 10 February 1963.
9. M. C. Whiteaker, born 7 March 1923; died 12 June 1948.
10. Larry Harris.
11. Shafter Vanhook, born 1898; died 1931.
12. Lula Ligon Vantrease, born 1873; died 1931.
13. R. C. Vanhook, M. D., born 1871; died 1941.
14. Kate Phillips, born 25 August 1895; died 7 October 1967.
15. Thomas Phillips, born 7 August 1892; died 20 January 1968.
16. Jeffrey Scott Edwards, born 18 October 1969; died .
17. William A. Blythe, born 1895; died .
18. Vassie J. Blythe, born 1898; died .
19. Glen E. Woodroof, born 1892; died .
20. Alyne H. Woodroof, born 1900; died 1958.
21. Louise Alexander, born 1862; died 1939.
22. Bessie Alexander, born 2 May 1893; died 14 November 1939.
23. Sam Alexander, born 7 October 1893; died 5 February 1932.
24. Susie A. Leyhew, born 1877; died 1953.
25. Richard Paul, born 1873; died 1945.
26. Wils Paul, born 1859; died 1928.
27. J. H. Bond.
28. Thomas M. Bond, born 1907; died 1940.
29. Erlene W. Bond, born 1916; died .
30. James H. Bond, born 1915; died 1946.
31. Florence Lea Hight, born 1887; died 1943.
32. Norman L. Hight, born 1881; died 1945.
33. Ernest W. Weatherly, born 23 September 1885; died 23 September 1959.
34. Minnie B. Weatherly, born 17 June 1885; died .
35. Robert Merritt, born 1911; died .
36. Elsie Merritt, born 1912; died .
37. Bennie W. Berry, born 25 November 1916; died 11 May 1974.
38. Clyde Adolph Williams, born 1904; died .
39. Rosa Kaufman Williams, born 1906; died 1967.
40. Rosa Williams.
41. Clara Osment.
42. C. A. Osment.
43. J. Ellen Osment.
44. W. S. Osment.
45. William G. Tatum, born 2 March 1920; died .
46. Etta Tatum, born 17 September 1925; died .
47. W. T. Leeman, born 1870; died 1944.
48. Alger B. Leeman, born 22 January 1890; died 20 August 1923.
49. Cora Leeman, born 1869; died 1961.
50. J. W. Leeman, born 1867; died 1934.
51. Merritt Elbert Travis, born 1899; died 1974.
52. Anna Bell Travis, born 1908; died .
53. Charles T. Sherrill, born 16 February 1898; died .
54. Julia E. Sherrill, born 27 November 1897; died 23 December 1948.
55. Eliza Sherrill, born 1866; died .
56. Thomas Sherrill, born 1856; died 1939.
57. Georgia Frances Weaver Wooden.
58. Delma Bond.
59. Vera Bond.
60. Thomas Harold, born 22 April 1929; died .
61. Annie Mae Williams, born 1930; died 1972.
62. Charlie P. Phillips, born 1887; died 1947.
63. Mable Phillips, born 1891; died 1961.
64. James D. Sherrill, born 1913; died 1968.
65. Madeline M. Sherrill, born 3 August 1920; died .
66. Rufus M. Sherrill, born 1888; died 1960.
67. Rosa V. Sherrill, born 1891; died 1969.
68. James W. Weaver, born 1871; died 1946.
69. Jessie M. Weaver, born 1879; died 1956.
70. Lannie Blair Weaver, born 1897; died 1932.
71. Mary Thompson Weaver, born 1900; died .
72. Orval Weatherly, born 1891; died 1950.
73. Lillie B. Weatherly, born 1888; died 1970.
74. Sally Beadle, born 1 November 1848; died 8 June 1928.
75. Robert W. Beadle, born 1 January 1845; died 14 August 1922.
76. Cannie Beadle, born 29 July 1876; died 9 May 1922.
77. Meridie Beadle, born 30 May 1872; died 25 March 1951.
78. William D. Fleming, born 23 May 1871; died 18 December 1934.
79. Bertha Fleming, born 29 December 1885; died 10 October 1966.
80. Jack L. Fleming, born 1913; died 1970.
81. J. A. Fleming, born 1913; died 1941.
82. J. S. Jones, born 1859; died 1948.
83. Callie Mae Jones, born 1888; died 1932.
84. Thomas T. Jones, born 1887; died 1968.
85. Sarah Thompson Knight Patton, born 1852; died 1939.
86. Hattie C. McPeak, born 18 July 1888; died 4 June 1957.
87. Carl Henderon, born 1882; died 1952.
88. Mary Henderson, born 1875; died 1951.
89. Dave Henderson, born 1873; died 1957.
90. Gertie Beadle, born 1895; died 1923.
91. Ann Leeman Beadle, born 1858; died 1934.
92. Wilson H. Leeman, born 1863; died 1932.
93. Birdie C. Leeman, born 1878; died 1969.
94. W. Arch Leeman, born 1867; died 1944.
95. Mattie H. Leeman, born 17 July 1876; died 26 February 19196.
96. A. U. Leeman, born 1865; died 1954.
97. Roy M. Sherrill, born 1911; died 1974.
98. Grace F. Sherrill, born 1913; died .

99. Dallas R. Jones, born 15 January 1926; died 11 August 1970. Tenn., Corporal, 3rd Armored Division, World War II.
100. Gloria L. Quarles Jones, born 3 September 1925; died .
101. Willie W. McPeak, born 1910; died 1945.
102. Oscar L. McPeak, born 1912; died 1947.
103. Maie C. Cunningham, born 1889; died 1971.
104. Estie W. Cunningham, born 1889; died 1955.
105. Robert W. Hubbard, born 1894; died 1932.
106. Herman Hardin, born 1894; died 1939.
107. May Hardin, born 1895; died 1970.
108. Henry S. Beadle, born 1888; died 1958.
109. Mattie Lou Beadle, born 17 February 1898; died .
110. Grover Maynard Leeman, born 1909; died 1938.
111. Ada Frances Leeman, born 1911; died 1967.
112. Levi D. Leeman, born 1886; died 1963.
113. Ersie H. Leeman, born 1888; died 1955.
114. Elsie Patten, born 1882; died 1971.
115. Mary E. Patten, born 18 June 1851; died 1 July 1943.
116. Joseph L. Patten, born 8 January 1843; died 6 April 1932.
117. Howard Lasater.
118. Kate Lasater.
119. Alex Lasater.
120. Mollie Sherrill, born 8 November 1841; died 11 July 1922.
121. Nannie Campbell, born 20 June 1871; died 17 April 1928.
122. Ivey Campbell, M. D., born 25 October 1848; died 7 June 1936.
123. L. J. Jacobs, born 7 July 1874; died 18 April 1955.
124. Charles S. Robertson, Jr., born 1928; died 1935.
125. William J. Carroll, born 4 June 1872; died 6 July 1937.
126. James W. Alexander, born 1 July 1892; died .
127. Clare Hight.
128. Fred P. Moser III, born 9 October 1948; died 9 October 1948.
129. M. Elwana Moser, born 21 April 1931; died 13 December 1931.
130. R. Juanita Moser, born 1928; died 1933.
131. Harry A. Moser, born 1905; died 1973.
132. Nancy Leoma Moser, born 1880; died 1972.
133. Wilson Henry Moser, born 1879; died 1956.
134. Fanny McPeak.
135. Elam McPeak.
136. Andrew M. McPeak, born 30 June 1900; died 1 June 1976.
137. Hairsie A. Cunningham, born 1881; died 1970.
138. Massie C. Cunningham, born 24 February 1879; died 27 August 1943.
139. Annie M. Cunningham, born 1899; died 1952.
140. Hezron H. Cunningham, born 1903; died 1964.
141. Doyle W. Porterfield, born 1905; died 1938.
142. Hassel C. Porterfield, born 31 May 1908; died .
143. Margaret Moser, born 1 July 1868; died 18 July 1935.
144. Jason V. Patterson, born 1896; died 1971.
145. Gladys M. Patterson, born 1902; died 1971.
146. Ellis H. Thompson, born 1892; died 1957.
147. Lula T. Porterfield, born 13 November 1876; died 19 March 1949.
148. E. Monroe Porterfield, born 2 October 1874; died 24 January 1956.
149. Ella Porterfield, born 7 July 1872; died 22 June 1943.
150. Melvin Porterfield, born ; died 7 October 1977.
151. Mary E. Patterson, born 1869; died 1939.
152. Nellie Clemmons.
153. Erlene Clemmons, Skipper, born 1901; died 1971.
154. Edward Skipper, born 1904; died .
155. Dovie A. Ashworth, born 1881; died .
156. Thomas H. Ashworth, born 1867; died 1948.
157. Maud S. Harris, born 1895; died .
158. Samuel H. Harris, born 1885; died 1956.
159. Laura P. Smith, born 1874; died .
160. Everette E. Smith, born 1867; died 1953.
161. Ottis Smith, born 1900; died 1957.
162. Zettie Smith, born 1902; died .
163. Hoyt Tarpley, born 1887; died 1947.
164. Elsie Tarpley, born 1889; died .
165. Martha J. Hudson, born 2 September 1865; died 5 May 1952.
166. George Y. Hudson, born 15 January 1858; died 15 October 1939.
167. Eura Mai Phillips, born 1922; died 1970.
168. James T. Phillips, born 3 February 1916; died .
169. Charles Hebert Rose, born 1927; died 1971.
170. James H. Cantrell, born 1923; died 1972.
171. Era L. Bond, born 1891; died 1974.
172. Cecil Bond, born 1887; died 1952.
173. Stella E. McPeak, born 1878; died 1972.
174. John L. McPeak, born 1867; died 1946.
175. Sam O. Hall, born 14 March 1898; died 19 November 1929.
176. Addie Hill Puckett, born 1895; died 1945.
177. Mollie E. Williams, born 10 November 1878; died 4 October 1961.
178. Barney P. Mitchell, born 1856; died 1931.
179. Fannie D. Mitchell, born 1869; died 1947.
180. Dock Mitchell.
181. J. Mitchell.
182. Kate Jones.
183. C. R. Jones.
184. Buford Jones.
185. Haskell Baskin, born 1908; died 1928.
186. Thomas Wilson Baskin, born 1881; died 1969.
187. Maud Moser Baskin, born 1888; died .
188. Evie Sherrill Baskin, born 8 August 1859; died 24 April 1951.
189. George Washington Baskin, born 15 September 1852; died 3 September 1943.
190. Mary Felure, born 1880; died 1965.
191. Alvin Felure, born 19873; died 1953.
192. James L. Felure, born 1910; died .
193. Hattie L. Felure, born 1912; died 1955.
194. Lewis Kelton Felure, born 1931; died 1976.
195. Julia Holaman Felure Knight Thompson, born 1856; died 1939.
196. Tishie Alsup, born 1868; died 1945.
197. Alice C. Sherrill, born 1883; died 1957.
198. Wilson H. Sherrill, born 1890; died 1963.
199. Betty V. Sherrill, born 19 May 1889; died .
200. Roy O'Neal.
201. H. T. Moser, born 1849; died 1926.
202. Lela K. Thompson, born 1903; died 1970.
203. John W. Thompson, born 27 October 1886; died 30 May 1958.

204. Elba Witherspoon, born 1874; died 1944.
205. Lillie Farene Morgan, born 1948; died 1948.
206. William M. Hayes, born 1877; died 1929.
207. Effie B. Gentry Hayes, born 1885; died .
208. Agnes P. Cunningham, born 1879; died 1945.
209. George A. Cunningham, born 1865; died 1942.
210. Lillie P. Morgan, born 1880; died .
211. Chris C. Morgan, born 1870; died 1961.
212. Lonie Y. Wilson, born 1886; died 1972.
213. Jame R. wilson, born 1888; died 1965.
214. Mary Lou Weatherly, born 24 January 1865; died 7 May 1943.
215. Jim S. Weatherly, born 13 May 1860; died 16 October 1926.
216. Fred W. Weatherly, born 1905; died 1957.
217. A. V. Weatherly, born 9 March 1870; died 8 November 1932.
218. Cora S. Gentry, born 1881; died 1950.
219. Pleasant G. Gentry, born 1853; died 1948.
220. Georgiana Cunningham Gentry, born 15 July 1859; died 5 January 1906.
221. Eris Judson Gentry, born 24 December 1890; died 24 September 18997.
222. Bessie Hayes, born ; died .
223. Jessie L. Harris, born 1884; died 1973.
224. William Henry Harris, born 1874; died 1960.
225. W. Thomas Harris, born 1924; died .
226. Oma B. Morgan, born 1912; died 1966.
227. Elma Reeves Gentry, born 29 April 1892; died 5 October 1976.
228. Ira D. Gentry, born 10 March 1888; died 11 April 1976.
229. Mary Frances Ballenger Richmond, born 1912; died 1963.
230. James C. Richmond, born 1911; died 1963.
231. Phillip W. Richmond, born 1949; died 9155.
232. Louise F. McPeak, born 1913; died 1966.
233. Linza A. McPeak, born 1900; died .
234. Ada Cason Phillips, born 14 August 1858; died 11 June 1924.
235. D. B. Phillips, born 2 August 1853; died 9 February 1934.
236. Ona Weatherly Phillips, born 1889; died 1943.
237. Frank McNairy Phillips, born 1889; died 1960.
238. Fannie A. Williams, born 1848; died 1937.
239. Gordon Williams, born 1879; died 1951.
240. Blonda Williams, born 1887; died 1938.
241. Dayton Lee Beadle, born 1961; died 1961.
242. Kizzie Stokes Curtis, born 3 January 1875; died 8 March 1929.
243. Henry Custis, born 25 September 1868; died 14 March 1947.
244. Beulah Mai Curtis, born 1901; died 1973.
245. Jerry Curtis, born 1903; died 1939.
246. Ricky Glenn Richmond.
247. James T. Richmond.
248. Walter L. Jones, born 1904; died 1966.
249. Lola M. Jones, born 1905; died .
250. A. P. Williams, born 1840; died 1937.
251. Fannie Enoch, born 1850; died 1933. Wife of A. P. Williams.
252. Della Williams, born 1882; died 1937.
253. Walter Williams, born 1876; died 1968.
254. Christine S. Tramel, born 26 February 1893; died .
255. Henry C. Tramel, born 23 March 1890; died 22 April 1961.
256. Bonnie R. Stroud, born 1907; died 1972.
257. Thomas Hill Stroud, born 1903; died 1970.
258. Merrell E. Stroud, 19 July 1930.
259. Evelyn Hayes Moser, born 1921; died 1930.
260. Bertha V. Moser, born 14 July 1883; died 11 September 1975.
261. Richard A. Moser, born 1 September 1884; died 25 November 1951.
262. Marvin Williams, born 1901; died .
263. Ellen Wraater Williams, born 1900; died 1970.
264. Claude M. Williams, born 1927; died 1951. Tenn., Corporal, 31st Infantry, 7th Infantry. Died in Korea.
265. Zora Adams Williams, born 1923; died .
266. Clarence Williams, born 1920; died 1973.
267. John H. Richardson, born 1907; died 1970.
268. Nellie G. Richardson, born 15 November 1908; died .
269. Ernest E. Beadle, born 1903; died 1930.
270. Mary Thompson Beadle, born 30 December 1875; died 4 September 1954. Wife of C. L. Beadle.
271. George Beadle, born 1902; died 1976.
272. Rubye Beadle, born 1901; died .
273. Ora Lasater, born 27 September 1898; died .
274. Allie L. Lasater, born 10 October 1897; died 26 March 1973.
275. Lillian F. Standridge, born 1928. died .
276. Charles H. Standridge, born 1910; died 1975.
277. Chris Haile, born 1925; died .
278. Clay Haile, born 1919; died 1976.
279. Jennie George, born 1876; died 1959.
280. Lois F. Beadle, born 1908; died 1964.
281. Oscar W. Beadle, born 1900; died 1968.
282. David Wilson Quarles, born 1951; died 1961.
283. Jessie M. Miller, born 1890; died 1959.
284. James I. Miller, born 1890; died 1959.
285. Marcus Green, born 22 December 1879; died 5 July 1948.
286. Carrie Thompson.
287. Alger Dee Clemmons, born 13 March 1925; died 14 April 1973.
288. Virginia M. Clemmons, born 10 August 1941; died .
289. Zirl Tomlinson, died 3 April 1976. Age 60 years.
290. Wilson Clemmons, born 1902; died 1954. World War II.
291. Mary P. Thompson, born 1892; died 1946.
292. William N. Thompson, born 1890; died .
293. Joe L. Fuller, born 1888; died .
294. Mary L. Fuller, born 1905; died .
295. Beatrice Hayes, born 1922; died .
296. Elmer W. Hayes, born 1919; died .
297. Mattie Floetty Wilson, born 1911; died .
298. Girves William Wilson, born 1908; died .
299. James R. Wilson, Jr., born 1927; died 1977.
300. Elma J. Williams, born 1882; died 1961.
301. Vinson Williams, born 1886; died 1960.

Note: an asterisk after the name means this person was included with another household. [B]=black The first number is the age of the person listed. The number in parentheses is the page number of the microfilmed original.

1880 FENTRESS COUNTY Head of Household Index

-
- | | | |
|--------------------------------|----------------------------|-------------------------------|
| ADKINS, David 22 (562) | BAGWELL, Drury 31 (515) | BEECH, Miles 38* (523) |
| ADKINS, Edward 27 (518) | BAGWELL, John 26 (515) | BELLE, Mathew 43 (556) |
| ADKINS, Eli H. 54 (518) | BALDWIN, Wesley 17* (533) | BERRY, Henry 38 (548) |
| ADKINS, Eliza 30 (552) | BALDWIN, Wesley 69 (514) | BERRY, Hewel 52* (550) |
| ADKINS, George 28 (522) | BALDWIN, William 20* (534) | BERRY, Jerry 34 (550) |
| ADKINS, Rachel 53 (562) | BALLARD, York 19* (565) | BERRY, Joseph 75 (550) |
| ADKINS, Sherod 28 (562) | BALWIN, Lafayette 31 (514) | BILLBURY, Jefferson 46 (541) |
| ADKINSON, Charles 27 (534) | BALWIN, Robert 23 (514) | BIRD, Andrew 71 (565) |
| ADKINSON, Dudley 28 (512) | BARNETT, James 26 (557) | BIRD, Elbert 29 (563) |
| ADKINSON, Edley 23* (510) | BARTON, Mary 43 (545) | BIRK, John H. 13* (551) |
| ADKINSON, Fancher 19* (510) | BEACH?, John 50 (543) | BLAIR, William 39* (537) |
| ADKINSON, Francis 39 (533) | BEASON, Margrett 39 (540) | BLANEY, Sarah 69* (531) |
| ADKINSON, Joseph A. 33 (534) | BEASON, Mary 17* (512) | BOLES, George 35* (505) |
| ADKINSON, Lewis 72* (534) | BEATY, A. 20 (m)* (521) | BOLES, Nancy 12* (504) |
| ADKINSON, Nancy 52* (509) | BEATY, Abram 29* (503) | BOLES, Robert 50 (513) |
| ALBERSON, John C. 53* (509) | BEATY, Armilda 38 (531) | BOND, Marshal 32* (543) |
| ALBERTON, Henry 25* (534) | BEATY, Ava 14* (507) | BOND, Nerry 40* (542) |
| ALBERTSON, Calvin M. 27 (520) | BEATY, Ava 59* (510) | BOND, Samuel 75* (543) |
| ALBERTSON, E. W. 57 (m)* (520) | BEATY, Balaam 33 (511) | BOND, Thompson 50 (541) |
| ALBERTSON, J. D. 45 (m) (520) | BEATY, Claiburn 38* (510) | BOOKOUT, James 44 (546) |
| ALBERTSON, Patey 60* (520) | BEATY, David 21* (507) | BOOKOUT, Sarah 73* (546) |
| ALBERTSON, Solomon 55 (520) | BEATY, David 24 (561) | BOSE?, Henry 49* (523) |
| ALBERTSON, William 26 (556) | BEATY, Didama 29 (563) | BOW?, Martha H. 25* (519) |
| ALEXANDER, Asberry 35 (532) | BEATY, Fleming 30 (562) | BOW?, Matildy J. 55* (525) |
| ALEXANDER, James M. 27 (532) | BEATY, George 53 (532) | BOWDEN, Elias Jr. 27* (509) |
| ALEXANDER, Lumiel 22 (532) | BEATY, George 66* (521) | BOWDEN, Elias Jr. 50 (507) |
| ALEXANDER, Robert C. 62* (532) | BEATY, Harvy 35 (552) | BOWDEN, Granville 23* (507) |
| ALEXANDER, Robert L. 29 (532) | BEATY, Hiram 31 (503) | BOWDEN, Jane 30 (509) |
| ALLEN, Amos 33 [B] (558) | BEATY, Isaac 26 (503) | BOWDEN, John 37* (509) |
| ALLEN, Elina 72* (540) | BEATY, Jacob 27 (520) | BOWDEN, Joshua 50* (510) |
| ALLRED, James A. 25 (530) | BEATY, James 23 (508) | BOWDEN, Sampson 38* (528) |
| ALLRED, Lean 20* (521) | BEATY, James 24 (545) | BOWDEN, William 54 (510) |
| ALLRED, Lewis 45 (507) | BEATY, James 29 (519) | BOWLS, Alex 29* (564) |
| ALLRED, Nina C. 29* (528) | BEATY, James 32 (565) | BOWLS, Margaret 80* (521) |
| ALLRED, Senter 40 (512) | BEATY, James Jr. 23* (508) | BOYD, Lidda 43 (534) |
| ALLRED, Smith 8* (510) | BEATY, James K. 37 (563) | BO ____, __anics 8 (m)* (546) |
| ALRED, Elerage 7* [B] (521) | BEATY, Jane 55 (510) | BRAMESON, Permelia 38* (556) |
| AMBROSE, Joe 23* (526) | BEATY, Jeremiah 43 (519) | BRANNON, Mary 34 (529) |
| ANDERSON, Andrew 34* (536) | BEATY, Jesse 29 (511) | BRANNUN, Adward 21* (520) |
| ANDERSON, Charley 29 (536) | BEATY, Joel 38 (503) | BRANON, Polly 55 (531) |
| ANDERSON, Emanuel 18* (547) | BEATY, John A. 19* (565) | BRANUM, Helen 13* (505) |
| ANDERSON, George 23* (536) | BEATY, John F. 35 (565) | BRANUM, Wm. 47 (521) |
| ANDERSON, Henry 41 (534) | BEATY, Lewis 28 (535) | BRIER, Abraham 22 (528) |
| ANDERSON, James L. 10* (536) | BEATY, Lydia 34 (508) | BRIER, Benjamin 67 (528) |
| ANDERSON, Jane 20* (557) | BEATY, Mahala 55 (519) | BROOKE, Nancy 35* (534) |
| ANDERSON, Jiles 23 (553) | BEATY, Margaret 25* (519) | BROOKS, Alvin 27 (537) |
| ANDERSON, Loucinda 73* (530) | BEATY, Marion 24 (505) | BROOKS, Ralph 24* (510) |
| ANDERSON, Rebecca 7* (536) | BEATY, Mary 9* (564) | BROOKS, Rhoda 67* (537) |
| ANDERSON, Thomas 61* (536) | BEATY, Mary E. 12* (517) | BROOKS, William S. 41* (524) |
| ANDERSON, William 54 (536) | BEATY, Mathew 27 (561) | BROWN, Albert E. 19* (536) |
| ANDREWS, Elizabeth 14* (523) | BEATY, Pleasant 30 (566) | BROWN, Alferd 30 (541) |
| ASHBURN, Anderson 26 (514) | BEATY, Pleasant 58 (561) | BROWN, Ary A. 54 (f) (552) |
| ASHBURN, Dava 20* (515) | BEATY, Richard 30 (510) | BROWN, Carrel 27* (522) |
| ASHBURN, George 51 (515) | BEATY, Sousan 78* (517) | BROWN, James 58* (536) |
| ASHBURN, James 32 (515) | BEATY, Thomas 35 (511) | BROWN, James A. 26 (537) |
| ASHBURN, James 40 (514) | BEATY, William E. 34 (503) | BROWN, James J. 2* (536) |
| ASHBURN, Wesley 31 (515) | BEATY, Zilpha 46 (545) | BROWN, Jerry 35 (540) |
| AUTASON, Benjamin 40 (535) | BEATY?, Jeremiah 62 (507) | BROWN, John 9* (530) |

- BROWN, Mary A. 17* (525)
 BROWN, Mathena 70 (539)
 BROWN, Permillia 7* (514)
 BROWN, Susan 58 (539)
 BROWN, Wash 39 (536)
 BROWN, William 31 (537)
 BROWN, William 42 (537)
 BROXMIN, Martyn 40* (520)
 BRUCE, William 66 (518)
 BRUTON, Abbigill 38* (556)
 BTRESS (SIC), Dowell 30 (556)
 BUCK, Ambros 26 (563)
 BUCK, Anna 52* (563)
 BUCK, Clabe 27 (563)
 BUCK, Isaac 35* (553)
 BUCK, James 16* (525)
 BUCK, John 16* (523)
 BUCK, Landon 40* (524)
 BUCK, Noah 32 (525)
 BUCK, Thomas 32 (564)
 BUCK, Wash 25 (547)
 BURNETT, Wise 44 (539)
 BURTRAM, Joel 31 (517)
 BUSH, Loouson 72 (530)
 BUTRAM, Dolphus 34 [B] (558)
 BUTRAM, Henry 55 (550)
 BUTRAM, James C. 25 (550)
 BUTREAN, Bramlet 17* (524)
 BUTRUM, Doctor 24 (557)
 BUTTRUM, Mary 34 [B] (559)
 CAGLE, John 36* (510)
 CALEB, Thomas 6* (558)
 CALL, John 35* (559)
 CAMPBELL, Isaac 36 (538)
 CAMPBELL, James 37* (540)
 CAMPBELL, Jessey 31 (538)
 CAMPBELL, John 72 (538)
 CAMPBELL, Joseph 35* (521)
 CAREY, Joseph 43* (515)
 CARFENDER, Sarah 21* (555)
 CARNEY, Andrew 1* (525)
 CARNEY, Emeline 53* (536)
 CARNEY, Frances E. 6* (536)
 CARNEY, John 34 (521)
 CARNEY, Wm. H. 6* (523)
 CARTER, S. B. 30 (m) (539)
 CARTER, Tulver 50 (551)
 CATEM, Thomas 19* (534)
 CELLS, Henry 28 (513)
 CELLS, Martha 16* (504)
 CERNY, James 4* (525)
 CHAMBERS, Elizabeth 35 (539)
 CHAPMAN, James 23 (565)
 CHAPMAN, John 26* (565)
 CHAPMAN, Linda 50 (565)
 CHAPMAN, Nancy 58* (560)
 CHEALT, Lewis K. 22 (520)
 CHISM, J. N. 26 (m)* (521)
 CHOAT, Austen 39 (520)
 CHOAT, John 40 (518)
 CHOAT, John 40 (550)
 CHOAT, Melvina 28* (521)
 CHOAT, Sabine 54 (547)
 CHOATE, Austin 64 (506)
 CHOATE, Christofer 31 (518)
 CHOATE, Christopher 36 (512)
 CHOATE, Jacob L. 54 (512)
 CHOATE, Katharine 7* (563)
 CHOATE, Martha 30* (565)
 CHOATE, Mary 70* (510)
 CHOATE, Russell 28* (522)
 CHOATE, Sabe? 9 (m)* (564)
 CHOATE, Sarah 12* (560)
 CHOATE, Seborn 28 (512)
 CHOATE, Traige? 30 (566)
 CHOATE, William 28 (547)
 CHRISTIAN, James 34 (566)
 CHUCK?, Deborah 32 (552)
 CLABORN, Elen 47 (542)
 CLABORN, John 30 (546)
 CLABORN, Leonard 22 (545)
 CLABORN, Robert 61 (546)
 CLABORN, Stephen 25 (546)
 CLABORN, William 27 (544)
 CLARK, Alvin 22 (566)
 CLARK, Elijah 56 (560)
 CLARK, Henry 18* (504)
 CLARK, Levy 75 (520)
 CLARK, Thomas 21* (551)
 CLARK, Thomas 70? (542)
 COBB, Catherine 50 (547)
 COBB, John 21* (521)
 COBB, John 63 (522)
 COBB, Laran? 15 (f)* (503)
 COBB, Mary 26* (521)
 COBB, Nancy A. 17* (520)
 COFFMAN, Henry 24 (563)
 COIL, Bilsia 60* (558)
 COLMAN, Loviza 47 (546)
 COLTER, Charles 29 (562)
 CONATSER, Andrew 68 (562)
 CONATSER, George 35 (520)
 CONATSER, George 36* (528)
 CONATSER, Hazel 50 (564)
 CONATSER, James 31 (560)
 CONATSER, Julia 21* (505)
 CONATSER, Malissa 45* (528)
 CONATSER, Philip 47* (517)
 CONATSER, Pierce 24* (523)
 CONATSER, Rachel 41* (512)
 CONATSER, Titus 19 (562)
 CONATSER, William 27 (504)
 CONATSER, Wm. 42 (562)
 CONATSER, Wm. 45 (562)
 CONATUR, Oren 18* (558)
 CONDSE, John 45 (519)
 CONLEY, James 54 (558)
 COOK, Jacson 32* (513)
 COOK, Reuben 23* (513)
 COOK, Sarah 70* (513)
 COOKE, Walter 40 (536)
 COOPER, Alexander 32* (505)
 COOPER, Amanda 74* (505)
 COOPER, Conway 53* (563)
 COOPER, David 29* (505)
 COOPER, David 31* (506)
 COOPER, Frances 4* (507)
 COOPER, George 24 (507)
 COOPER, Jacob 68 (503)
 COOPER, James O. 31 (508)
 COOPER, Jane 33 (505)
 COOPER, Nancy 45 (544)
 COOPER, Oliver 40 (511)
 COOPER, Simon 25* (505)
 COOPER, Thomas 29 (565)
 COOPER, William 26 (503)
 COOPER, William 26 (506)
 COPELAND, Alexander 35* [B] (528)
 COPLY, George 58 (531)
 COPLY, James 33 (530)
 COSELEONS, Noah 32* (546)
 COSELEONS, Willis 62 (546)
 COWIN, Eliza 42* (543)
 CRABTREE, Alvin 36* (559)
 CRABTREE, Balor 25 (522)
 CRABTREE, C. C. 34 (f)* (534)
 CRABTREE, Caleb 22 (558)
 CRABTREE, Daskin 49* (555)
 CRABTREE, Elizebeth 50* (535)
 CRABTREE, Hiram 25 (549)
 CRABTREE, Hiram 69 (529)
 CRABTREE, Hiram? 66 (557)
 CRABTREE, Isaac 53 (552)
 CRABTREE, Isac O. 27* (559)
 CRABTREE, James 25* (529)
 CRABTREE, James 65 (526)
 CRABTREE, Julie 68 (521)
 CRABTREE, Marget 45 (558)
 CRABTREE, Melvina 17* (557)
 CRABTREE, Simpson 36 (558)
 CRABTREE, Stokly 46 (534)
 CRABTREE, Thomas 39 (557)
 CRABTREE, Wilbern 1* (559)
 CRABTREE?, Miller 28 (541)
 CRAIG, Golimar? 52 (550)
 CRAIG, James 21* (522)
 CRAVENS, Henry 53* (546)
 CRAVENS, James 22 (519)
 CRAVENS, Manerva 39* (563)
 CRAVENS, Noah 20 (506)
 CROCKET, Calvin 20 (529)
 CROCKET, Coonrod 55* (530)
 CROCKET, James B. 62 (529)
 CROCKET, Louverna 4 (532)
 CROCKET, Robert W. 28 (529)
 CROCKET, Sidney 21* (528)
 CROCKETT, James 38 (538)
 CROCKETT, Joe 48 (545)
 CROCKETT, Nancy 80* (539)
 CROCKETT, William 40 (539)
 CROSS, John 28 (514)
 CROUCH, Almarine 28 (m) (538)
 CROUCH, Deborah 6* (553)
 CROUCH, Elis 48* (538)
 CROUCH, Enos? 28 (545)
 CROUCH, Henders 53 (548)
 CROUCH, James 26 (550)
 CROUCH, James 57 (555)
 CROUCH, James H. 31 (526)
 CROUCH, Joe 25 (545)
 CROUCH, John 25* (540)
 CROUCH, Martin 32 (534)
 CROUCH, Pernina 45? (522)
 CROUCH, Sarah 48* [B] (559)
 CROUCH, Timothy 24 (550)
 CROUCH, Wash 48 (548)
 CROWLY, James Y. 34* (531)
 CROYD, Oliva 67 (534)
 CULVER, Jacob 26 (511)
 DAMARY, Anna 10* (531)
 DAVICE, Avey 17* (524)
 DAVICE, Daniel 53* (521)
 DAVICE, James 32 (526)
 DAVICE, John 11* (527)
 DAVICE, Malindy 63* (521)
 DAVIDSON, Benson 25 (551)
 DAVIDSON, Emaline 60* (520)

- DAVIDSON, George 27 (551)
 DAVIDSON, Huey 29 (542)
 DAVIDSON, Job 27 (542)
 DAVIDSON, Joe 62 (548)
 DAVIDSON, John 32 (548)
 DAVIDSON, Person 58 (551)
 DAVIDSON, Sam 44 (549)
 DAVIDSON, Sanford 26* (505)
 DAVIDSON, Stephen 63 (541)
 DAVIDSON, Thom 32 (546)
 DAVIDSON, Wayn 56 (550)
 DAVIDSON, William 60 (540)
 DAVIS, Elizabeth 63* (503)
 DAVIS, Lewis 27 (564)
 DAVIS, Matilda J. 24* (536)
 DAVIS, Millie 24* (529)
 DAVIS, Nelson 71 (508)
 DAVIS, William R. 35 (552)
 DECK, John 42 (514)
 DEEMER, Alexander 30* (508)
 DELK, Columbus 25 (557)
 DELK, David 26 (557)
 DELK, David 64 (558)
 DELK, Dudley 26* (522)
 DELK, Eddley 32* (555)
 DELK, Ellie 24* (557)
 DELK, Gemima 92* (557)
 DELK, Henry 60 (559)
 DELK, James 48 (557)
 DELK, Jeremiah 37 (556)
 DELK, John 20* (522)
 DELK, John 22 (557)
 DELK, John 60 (557)
 DELK, Lemuel 39 (555)
 DELK, Mirdric 56* (559)
 DELK, Shirdric 40 (557)
 DISHMAN, Loula 43 (553)
 DISHMON, Ambeise 51 (549)
 DISHMON, Andrew 45 (549)
 DISHMON, Jefferson 50 (549)
 DISHMON, John 28 (550)
 DISHMON, Louiza 30* (549)
 DIXON, Martha 47* (544)
 DOSS, Amus 55 (526)
 DOWDY, Arron 23 (542)
 DOWDY, Jackson 28 (542)
 DOWDY, Oliver 34* (542)
 DOWDY, Rufus 55 (542)
 DOWNS, Caroline 15* (536)
 DOWNS, John 45 (537)
 DUNCAN, Cresa 56 (547)
 DUNCAN, Frank 28 (547)
 DUNCAN, Philip 43 (546)
 DUNCAN?, Jonah 41 (547)
 DURAHM, Eliza 43 (533)
 EDWARDS, Sarah A. 39* (529)
 ERWIN, Wade H. 61* (528)
 EVANS, Alferd 30 (540)
 EVANS, Calvin 32 (540)
 EVANS, Daniel 21 (550)
 EVANS, Deborah 51? (548)
 EVANS, Droak 26 (559)
 EVANS, Elisha 60 (552)
 EVANS, Jackson 31* (547)
 EVANS, Jane 65* (550)
 EVANS, Jef 57 (548)
 EVANS, John 35* (542)
 EVANS, Joseph 28 (536)
 EVANS, Margrett 50 (539)
 EVANS, Matilda 64* (564)
 EVANS, Reves 32 (539)
 EVANS, Sarah 55 (539)
 EVANS, Shelby 33 (564)
 EVANS, Taylor 21 (544)
 EVANS, William 23 (539)
 FELKINS, James 35 (541)
 FERRELL, Charley 21 (555)
 FIGHT?, Peter 72 (545)
 FINLY, Emeline B. 19* (532)
 FITZLERLSE, Wily 38 (549)
 FLECHER, J. M. 37 (m) (524)
 FLOWER, Jerry 24 (560)
 FLOWERS, Catharine 17* (540)
 FLOWERS, Manson 55 (544)
 FLOWERS, Mary 24* (556)
 FLOWERS, Simon 38 (547)
 FLOWERS, William 22* (542)
 FLOWERS?, — 27 (m) (542)
 FORD, Susan 42* (547)
 FORD, William 38* (541)
 FOWLER, Benjamin 21 (556)
 FOWLER, Sampson 35 (552)
 FOWLER, Thursday 45 (548)
 FRANKLIN, Abe 50 (562)
 FRANKLIN, Art 28 (548)
 FRANKLIN, C. 50 (m) (522)
 FRANKLIN, Clark 44 (504)
 FRANKLIN, George 39 (556)
 FRANKLIN, Headley 39 (510)
 FRANKLIN, John 19 (556)
 FRANKLIN, John 30* (508)
 FRANKLIN, Matilda 49* (510)
 FRANKLIN, Susan 22* (551)
 FRANKLIN, Thomas 30 (564)
 FROGG, Johnt. 30 (539)
 FROGGE, Jackson A. 35 (529)
 FROGGE, John W. 49* (555)
 FRY, Andrwe J. 39* (516)
 FUGGE, Lula 17* (534)
 FULTON, Daniel 69 (510)
 FULTON, Henry 18* (509)
 GALMON?, Rebecah 45 (552)
 GARNETT, A. M. 51 (m) (518)
 GARRETT, Anna 71 (535)
 GARRETT, Bransford 23* (507)
 GARRETT, Daniel 54 (561)
 GARRETT, Elijah 32 (520)
 GARRETT, Filmore 27 (544)
 GARRETT, Jack 31 (535)
 GARRETT, John 44 (535)
 GARRETT, John H. 9* (541)
 GARRETT, Lafayette 22 (535)
 GARRETT, Peter 18* (545)
 GARRETT, Shadrick 46 (535)
 GARRETT, Stephen 55* (509)
 GARRETTE, Stephen 21 (546)
 GARRITT, Creed 35* (563)
 GAUDIN, John W. 49* (528)
 GENTRY, Jessie 24 (537)
 GENTRY, John 39 (537)
 GENTRY, William 64* (536)
 GEORGE, James 60* (531)
 GIBBS, Franklin 50* [B] (534)
 GIBS, Charles 25 (564)
 GILBREATH, William 51* (545)
 GILLENLINE, James 39* (565)
 GILLENLINE, R. S. 47 (m) (562)
 GINNING, Anthony 74 (556)
 GIPSON, Thomas 40 (543)
 GIVENS?, Jasper 34 (548)
 GOAD, Margaret 37* (525)
 GOAD, W. M. 40 (m)* (525)
 GOLDEN, Timothy 24 (556)
 GONEY, Banks 55* (513)
 GONEY, Timothy 33 (513)
 GONEY, William 26* (515)
 GOOCHING, Rufus K. 36 (538)
 GOODING, Andy A. 47* (528)
 GOODING, Nicholas 73 (544)
 GORMAN, John 27* [B] (521)
 GOULD, John W. 75 (531)
 GOWNEY, Timothy 68* (565)
 GRAHAM, James 22* (528)
 GRAY, Aaron 24* [B] (534)
 GRAY, Harrett 65* [B] (521)
 GRAY, Joseph 36 [B] (521)
 GRAY, Robert 56 (557)
 GREEN, Newton 51 (545)
 GREER, Bengyman F. 19 (519)
 GREER, Bengyman 45 (517)
 GREER, David 30 (550)
 GREER, Josh C. 48 (519)
 GREER, Samuel P. 25* (519)
 GRIFFEE, Munson 17 (551)
 GRIGREE, Malisa 4* (555)
 GUFFEE, Harrison 52* (556)
 GUFFEY, Emberson 38 (536)
 GUFFEY, Louverna 42 (528)
 GUNTER, Annie 39* (509)
 GUNTER, John 35 (505)
 GUNTER, John H. 9* (505)
 GUNTER, Mary J. 14* (507)
 GUNTER, William 30* (564)
 HALL, Allen 37 (533)
 HALL, Henderson 24 (534)
 HALL, Jackson 51 (533)
 HALL, Jonathan 29 (533)
 HALL, Luke 43 (534)
 HAMMOCK, Jane 80* (526)
 HANCOCK, Mima 44 (526)
 HANEY?, Mary J. 28* (522)
 HARDEN, Andrew 46 (556)
 HARDEN, Jourdan 30 (555)
 HARDEN, Smiley 19 (556)
 HARDING?, Samuel 28* (546)
 HARMON, Levi 56* (541)
 HARMON, Marget 70* (553)
 HARMON, Rubin 47 (538)
 HARRIS, Eliza 50 (540)
 HARRIS, Mary 25* (540)
 HATFIELD, Alcie 74 (553)
 HATFIELD, Edward 25 (553)
 HATFIELD, Ellen 6* (559)
 HATFIELD, Emanuel 46* (549)
 HATFIELD, James 22 (553)
 HATFIELD, Marrion 34 (553)
 HATFIELD, Parsida 21* (553)
 HATFIELD, Thomas 11* (559)
 HATFIELD, Victoria 18* (534)
 HATFIELD, William 59 (558)
 HAYES, Marrymer? 38 (m) (518)
 HAYS, Jane 56* (519)
 HAYS, Jane 69* (510)
 HICKS, Hade 30 (539)
 HICKS, James 32* (534)
 HICKS, James 35 (532)
 HICKS, John 37 (529)

- HICKS, John W. 53 (534)
 HICKS, Richard 32 (534)
 HIDER, Ad 25 (522)
 HIDER, Allevus? 41 (523)
 HIDER, Joseph 65 (562)
 HIGGENS, Alans? 25* (531)
 HIGHFAX?, Sam 27 (526)
 HILDRETH, Loucinda 55 (540)
 HILL, Berton 22 (562)
 HILL, Guston B. 20 (564)
 HILL, Jefferson 32 (562)
 HILL, Manerva 56* [B] (528)
 HILL, William 36 [B] (529)
 HIND, Joel 28 (518)
 HINDS, Joel 32 (526)
 HINDS, John Q. 28 (518)
 HINDS, Perry 36 (508)
 HINDS, Samuel 51 (518)
 HISAW, Anna 46 (540)
 HOGUE, Anderson 44 (512)
 HOGUE, Elizabeth 45* (509)
 HOGUE, John 22 (515)
 HOGUE, Pleasant 31 (516)
 HOGUE, Solomon 44 (509)
 HOGUE, Vardeman 50 (512)
 HOLBERT, Joe 36 (545)
 HOLBERT, Stephen 70 (544)
 HOLDING, Green 62 (541)
 HONEY, John 50 (551)
 HOOD, Elisha 71* (513)
 HOOD, Helen 21* (513)
 HOOD, Jeremiah 55* (513)
 HOOD, John 23* (509)
 HOOD, John 44* (513)
 HOOD, Solomon 47 (513)
 HOOD, Thomas 53 (512)
 HOOD, Zepheniah 46 (513)
 HOOVER, Anna F. 9* (536)
 HOOVER, Artema 48* (503)
 HOOVER, Henry 30 (506)
 HOOVER, Isabel* (536)
 HOOVER, James 14* (536)
 HOOVER, James M. 44* (507)
 HOOVER, Jennie 33 (506)
 HOOVER, John 30 (566)
 HOPKINS, J. C. 60 (m) (524)
 HOPKINS, John W. 11* (524)
 HOWARD, John J. 53 (504)
 HOWARD, Joseph 66 (536)
 HOWARD, William 33 (537)
 HUCKEY, Isham 45* (563)
 HUCKEY, Jackson 39 (561)
 HUCKEY, Rebecca 75* (564)
 HUCKEY, William 19 (563)
 HUDDLESTON, Caroline 19* (528)
 HUDDLESTON, Cordela 17* (540)
 HUDDLESTON, Flave 22 (m) (561)
 HUDDLESTON, Hanah 77* (543)
 HUDDLESTON, Hannah 78* (560)
 HUDDLESTON, Joel G. 35 (504)
 HUDDLESTON, Malinda 41 (561)
 HUDDLESTON, Natema 51 (560)
 HUDDLESTON, Poley 39* (544)
 HUDDLESTON, Thos. 68* (504)
 HUDDLESTON, Vann 46* (512)
 HUDDLESTON, Willbur 28 (542)
 HUDDLESTON, William 29* (505)
 HUDDLESTON, Winton 23* (541)
 HUDELLSTON, J. A. 32 (m)* (560)
 HUFF, Clara 7* (541)
 HUFF, Nancy 39 (557)
 HUGG, Alvin 37* (559)
 HULL, A. B. 68 (m) (524)
 HULL, J. R. 24 (524)
 HULL, L. A. 25 (m) (525)
 HULL, L. C. 30 (m) (524)
 HULL, Winnie 22* (514)
 HURST, Church 24 (547)
 HURST, James 37 (555)
 HURST, Miller 53* (559)
 HURST, Robert 56* (559)
 HURT, Imse? F. 35 (538)
 ISBILL, Beechum 27 (508)
 ISBILL, Jason 28 (508)
 ISBILL, William 51 (509)
 JACKSON, Charles 30 (543)
 JACKSON, Louisa 50 (506)
 JENING, Mark 65* (549)
 JENKINS?, Robert 37 (558)
 JENNING, John 32 (549)
 JENNINGS, Alea? 18 (m)* (549)
 JOHNSON, Andrew 20 (547)
 JOHNSON, Andrew 35 (542)
 JOHNSON, Asa 44* (547)
 JOHNSON, Julius 37 (552)
 JOHNSON, Marion 44* (552)
 JOHNSON, Melvin 23 (534)
 JOHNSON, Phillip 52* (514)
 JOHNSON, Presley 36 (512)
 JOHNSON, Wm. 17* (561)
 JOINERS?, Rohana 15* (542)
 JONES, Charley 26 (537)
 JONES, Hartshell 26 (542)
 JONES, Henry C. 24 (524)
 JONES, Irvin 38* (533)
 JONES, Jacob 60 (556)
 JONES, Lize 24* (549)
 JONES?, Miles 26 (523)
 JONES?, Warren 22 [B] (527)
 KEERNEY, Anna 50 (543)
 KEITH, William 30 (552)
 KEMPLEN, George 26 (553)
 KEMPLEN, Thomas 56* (555)
 KEMPLEN, William 59 (534)
 KERLEY, William 23 (555)
 KERLY, Daniel 25 (534)
 KERLY, George 46 (555)
 KERNELL, Jesse 50 (540)
 KEY, Stephen 52 (514)
 KEY, William 30 (515)
 KIDD, Martha 53 (553)
 KIDWELL, David 50 (534)
 KIDWELL, Samuel 54 (534)
 KIMBRELL, Julia 33 (535)
 KINELY?, Isham 42 (518)
 KING, Andrew 22* (503)
 KING, Elizabeth 56* (519)
 KING, Henry C. 30* (506)
 KING, Henry L. 22 (506)
 KING, Jarred 43 (543)
 KING, Louisa 58* (505)
 KING, Peter 30 (505)
 KING, Rich 17* (563)
 KING, Robert 60 (503)
 KING, Ruth 49 (506)
 KING, Thomas 45 (506)
 KING, William 36 (516)
 KING, William 45 (506)
 KINGTON, George S. 70 (528)
 KINGTON, John H. 36 (530)
 KINGTON?, A? 23 (m)* (523)
 KIRKENDOLPH, Mary 53* (513)
 KOGER, Agness 60* (538)
 KOGER, John 31 (538)
 KOGER, William 28 (552)
 LAPEER, Zephia 36* (503)
 LAVENDER, George D. 34 (533)
 LAVENDER, Hiam 60 (558)
 LAVENDER, Hillery 27 (529)
 LAWSON, Nancy 30* (543)
 LAYTHAM, John 31 (551)
 LEA, William 28 (534)
 LEDBETTER, Alvin 30 (563)
 LEDBETTER, Sous. 70 (517)
 LEE, B. 24 (m)* (522)
 LEE, Robert B. 7* (520)
 LEFFEW, Henry 35 (557)
 LINDER, George 39* (510)
 LIPPS, William 34* (508)
 LITTLE, Harmon 49 (535)
 LITTRELL, Elizabeth 47* (538)
 LITTRELL, George 28 (539)
 LITTRELL, Thomsa 25 (538)
 LIVINGSTON, James L. 23* (528)
 LIVINGSTON, Robert 20 (531)
 LOHORN, Loucinda 22* (549)
 LOUDON, Augustus 27 (535)
 LPOLSTON, Solamon 27* (549)
 LUDEN, Edward 20 (531)
 LUSTER, Ed 46 (551)
 LUSTER, Mary 22* (538)
 LYNAR?, Thom J. 70 (521)
 LYNCH, George 30 (519)
 MACE, Andru J. 31 (521)
 MACE, Mary A. 40 (518)
 MACE?, Phillip 50 (518)
 MADEWELL, Moses 42 (511)
 MAGINIS, Drewah? 5 (m)* (550)
 MALSON, Daniel 34 (555)
 MANES, James 56 (561)
 MANES, John 37 (561)
 MANIS, James 30 (561)
 MANIS, William 23 (545)
 MARTIN, Peter 23 [B] (509)
 MASENGAL, Martha 12* (503)
 MASENGILL, Samuel 1* (534)
 MASENGILL, William 27 (553)
 MASINGAL, Jane 20* (504)
 MASINGILLE, Beky A. 24* (517)
 MASINGILLE, Matildy 17* (520)
 MASSINGILL, Arch 50* (525)
 MATHEWS, James 27 (503)
 MATHEWS, Jesse 24 (503)
 MATHEWS, Johnathan 42 (531)
 MATHIS, William 35 (545)
 MATTHEWS, Dalton 25 (517)
 MATTHEWS, George 31 (520)
 MATTHEWS, Hiram 224 (521)
 MATTHIAS, Thomas 50 (517)
 MCCLELLAN, John 50 (515)
 MCCLEN, Lousindsa 49* (522)
 MCCOWAN, Frances 48 (536)
 MCDANIEL, Jacob 38 [B] (505)
 MCDONALD, Thomas 31* (533)
 MCDONNARD, John 26 (544)
 MCFARLAND, Prissa 76* (560)
 MCGEE, William 21 (530)

- MCGEE, William J. 47 (530)
 MCGINNIS, Shad 35* (534)
 MCGINNIS, Aaron 44 [B] (557)
 MCGINNIS, Luisa 50 (558)
 MCGINNIS, Nancy 36* (534)
 MCGUFFA, James 60* (559)
 MEEK, Alfred 27 (540)
 MEEK, James 38* (539)
 MERIDAY, Tinnedy? 31 (m) (527)
 MILLER, Artema 64* (555)
 MILLER, Burt 55* [B] (546)
 MILLER, Harve? 22 (522)
 MILLER, Irvin 30 (515)
 MILLER, James 40? (522)
 MILLER, Pollie 44* (526)
 MILLER, Priscilla 50* (514)
 MILLER, Robert 30* (561)
 MILLER, Robert 9* [B] (559)
 MILLER, William 60 (522)
 MILLSAPS, Mark? 51* (523)
 MOLES, John 20* (564)
 MOODY, Ben 21 (551)
 MOODY, Benjamin 45* (550)
 MOODY, Green 49 (545)
 MOODY, John 35 (551)
 MOODY, Lissie 40* (545)
 MOODY, Peter 57 (551)
 MOON, Melisey L. 10* (523)
 MOORE, Mary 47* (561)
 MOORE, William 27 (565)
 MORGAN, Chamap 32* (536)
 MORGAN, John 28* (513)
 MORGAN, Julia 63* (536)
 MORRIS, Spence 55 (529)
 MULES?, James C. 20* (541)
 MULLENAX, Anderson 24* (505)
 MULLENAX, Eli 65 (508)
 MULLENAX, Mary 25* (508)
 MULLENIX, John 41 (508)
 MULLENIX, Samuel 32 (562)
 MULLENS, Joe 29 (541)
 MULLINIX, Mary 40* (522)
 MULLINIX, Nathaniel 80* (523)
 MULLINIX, William 27 (522)
 MULLINS, Thomas 40 (525)
 MURRAY, William 49 (532)
 NATION, Michiel 46 (514)
 NEELY, Robert 53 (514)
 NEELY, Samuel 55 (515)
 NICOLAS, George 25 (544)
 NICOLAS, Neil 28 (544)
 NICOLAS, Neil 79 (541)
 NICOLAS, Sarah 55* (544)
 NIGHT, Joe 41* [B] (538)
 NORMON, James 45 (524)
 NORRIS, Emily 50 (515)
 NORRIS, John 14* (521)
 NORRIS, Jonathan 47 (533)
 NORRIS, Levi 35* (545)
 NORRIS, Mary O. 20* (560)
 NORRIS, Pinkney 55 (541)
 NORRIS, William 20* (525)
 NORTHRUP, Hiram S. 54 (531)
 NORTHRUP, John S. 77* (530)
 NORTHRUP, William 16* (531)
 OLIVER, William 26 (538)
 ORTON, David G. 32* (552)
 OWENS, Ava 24* (511)
 OWENS, F— 25 (m) (522)
 OWENS, Fereaby 49 (507)
 OWENS, James 34 (531)
 OWENS, James 7* (522)
 OWENS, James B. 55 (508)
 OWENS, Malinda 19* (563)
 OWENS, Martin V. 38 (531)
 OWENS, Susan 42 (503)
 OWENS, Thomas 30 (531)
 PARKER, James 42 (543)
 PAUL, Anna 60 (528)
 PAUL, James 58* (528)
 PAUL, Sarah 27 (534)
 PAUL, William 57 (558)
 PAYNE, Eliza 52* (526)
 PAYNE, Elizabeth 50* (540)
 PEARCE, Mark 35 (566)
 PEARCY, Alfred 22* (530)
 PEARCY, Catherine 16* (529)
 PEARCY, Green 21* (535)
 PEARCY, Green B. 60 (529)
 PEARCY, Rachel 24 (532)
 PEAVY, George 70 (547)
 PEAVYHOUSE, George 35 (558)
 PENNYCUFF, David 54* (566)
 PENNYCUFF, E. 18 (f)* (522)
 PENNYCUFF, Jacob 20* (565)
 PENNYCUFF, Joel 11* (566)
 PENNYCUFF, John 21* (565)
 PENNYCUFF, John 23* (564)
 PENNYCUFF, John 31 (520)
 PENNYCUFF, Mat 55 (521)
 PENNYCUFF, Mathew B. 28* (517)
 PENNYCUFF, Wm. 21 (521)
 PERDUE, Delilah 70* (543)
 PERDUE?, Vina 68? (545)
 PERKINS, Mary 25* (513)
 PETERS, Harvy 28 (515)
 PETERS, Thomas 25 (515)
 PETRESS, Franklin 43* (559)
 PETTY, Cupp 21 (562)
 PETTY, Elizabeth 44* (562)
 PETTY, Mahala 30* (565)
 PETTY, William 30 (561)
 PHELPS, Wm. P. 40* (560)
 PHILIPS, Cora 5* (531)
 PHILIPS, Hiram 25 (535)
 PHILIPS, Joseph 45 (535)
 PHILIPS, Pleasant 38 (530)
 PHILLIPS, Abe 35* (524)
 PHILLIPS, Charlotte 24* [B] (514)
 PIERCE, Annie 38 (545)
 PIERCE, Samuel B. 47 (524)
 PILE, Doak 24 (540)
 PILE, Dudley 27* (534)
 PILE, Erasmus 26* (556)
 PILE, Floyd 27 (553)
 PILE, Jackson W. 32 (529)
 PILE, Jasper 20 (556)
 PILE, Jefferson 35* (542)
 PILE, John J. 56 (555)
 PILE, Mary 4* (534)
 PILE, Pleasant 48* (559)
 PILE, Robert 7* (534)
 PILE, Shepherd 39* (559)
 PILE, Shird 34 (550)
 PILE, Susan 62* (553)
 PILE, Thomas 22* (558)
 PILE, William 27 (553)
 PILE, Wilson 22* (559)
 PILEY, Mary 79* (563)
 PINAE?, Ewine H. 46 (542)
 POE, Lucy 54* (560)
 POLSTON, Dudley 28 (541)
 POLSTON, Louis 28 (534)
 POOR, Amis 45* (545)
 POOR, Calaway 72 (547)
 POOR, Fedric 28* (544)
 POOR, James 71 (546)
 POOR, Jerry 29 (544)
 POOR, Louisa 46 (561)
 POOR, Mary 17* (541)
 POOR, Richiard 72 (544)
 POOR, Wesley 38 (547)
 POTTER, Ewel 23 (523)
 POTTER, Henry L. 23 (523)
 POTTER, John 30 (521)
 POTTER, Julin 50 (523)
 PRESLEY, Elizabeth 20* (563)
 PRESLEY, George 22 (546)
 PRESLEY, Pleasant 36 (546)
 PRESLEY, Russle 25 (546)
 PRIAR, Charles 25 (564)
 PRIAR, Parker 27 (564)
 PRICE, James 40 (520)
 PRICE, Lewis 27 (522)
 PRICE, Myra 33* (530)
 PRICE, Sarah 65* (522)
 PRITCHARD, Alfred 26 (560)
 PRITCHARD, Amanda 34* (563)
 PRITCHARD, John 38 (561)
 PRITCHARD, Simon 36 (560)
 PRITCHARD, Thomas 65 (560)
 PRITCHARD, William 40 (561)
 PROXMIRE, Silas 41 (556)
 PULLEN, James 24 (507)
 PULLEN, William 21 (506)
 PYLE, William Jr. 64* (527)
 PYLES, James 30 (527)
 RABORN, Mary 24* (539)
 RAINS, Andrew J. 52 (548)
 RAINS, Calvin 48 (555)
 RAINS, Frank 34? (547)
 RAMSEY, Albert 26 (555)
 RAMSEY, Caleb 24 (555)
 RAMSEY, Preston 29 (534)
 RAMSEY, Robert 55 (555)
 RAMSEY, Thomas 35 (534)
 RAMSY, Samuel 59* (534)
 RANGE, Alfred C. 21 (525)
 RANGE, J. T. 51 (m)* (523)
 READ, Emeline 48 (547)
 REAGAN, A. J. 26 (m)* (564)
 REAGAN, Anjalina 18* (523)
 REAGAN, C. A. 21 (m) (561)
 REAGAN, Charles 21 (563)
 REAGAN, Charles 74 (563)
 REAGAN, Frank 33* (517)
 REAGAN, Geo. 8* (519)
 REAGAN, George 34 (565)
 REAGAN, Henry 54* (546)
 REAGAN, James 41 (563)
 REAGAN, Joel 18* (546)
 REAGAN, Joel 33 (503)
 REAGAN, Joel 73 (518)
 REAGAN, John 41 (565)
 REAGAN, John A. 22 (504)
 REAGAN, Margaret 26* (513)
 REAGAN, Marshall 11* (513)

- REAGAN, Nancy 68 (518)
 REAGAN, Rebecca 45* (564)
 REAGAN, Thomas 33* (519)
 REAGAN, Thomas 55 (543)
 REAGAN, Will 24 (543)
 REAGAN, William 30 (543)
 REAGAN, Wm. 21 (523)
 REAGAN?, Millsup 71 (517)
 REDMAN, Benjamin 70 [B] (559)
 REDMAN, Burl 45 [B] (553)
 REDMAN, Hue 28 [B] (553)
 REDMAN, James 47* (555)
 REDMAN, John 27* [B] (559)
 REECTOR, James 55 (542)
 REECTOR, Sam 28 (542)
 REEVS, David 23 (540)
 REGAN, Joel L. 38* (517)
 REGAN, Mary 18* (517)
 RENEAU, Crisley 75 (549)
 RENEAU, James 31 (549)
 RENOW, William 54 (558)
 REYNOLDS, Orilia 65 (f) (518)
 REYNOLDS, Thomas 39 (518)
 RICH, George W. 49 (560)
 RICH, Jackson 28 (564)
 RICH, James 61 (547)
 RICH, John 23 (566)
 RICH, John 56* (549)
 RICH, Landen C. 31 (531)
 RICH, William 68 (563)
 RICHARDS, John 53 (516)
 RICHARDSON, Bradford 33 (552)
 RICHARDSON, Bucy? 26 (f)* [B] (559)
 RICHERDSON, Hanah 64* [B] (559)
 RIGNEY, Mark 30 (551)
 RIGNEY, William 20 (549)
 RILEY, Mittin 20 (m) (560)
 RILY, Floid 66? (547)
 RILY, Lodemy 16* (538)
 ROAL, margrett 45* (542)
 ROARK, Biddie 75* (528)
 ROBBINS, Alfred 66 (503)
 ROBBINS, Carroll 24 (504)
 ROBBINS, Elizabeth 87 (520)
 ROBBINS, George 38 (504)
 ROBBINS, Isaac 32* (503)
 ROBBINS, James 78 (504)
 ROBBINS, John 40 (503)
 ROBBINS, Mary 60 (504)
 ROBERTSON, Marian 15* (534)
 ROBERTSON, Robert 60 (536)
 ROBERTSON, Thomas 52 (515)
 ROBINSON, George 34 (519)
 ROISDON, Abraham 55* (526)
 ROORE, Richard 22* (528)
 ROSS, Cenanda 57 (566)
 ROYSDON, Isaac 52* (526)
 RUM, Mary 15* (520)
 RUNELS, Shird K. 26 (548)
 RYAN, Jane 35* (541)
 RYNE, Samuel 36* [B] (558)
 RYSDON, Jacob 20 (526)
 RYSDON, William 23 (526)
 SALTER, John 38 (540)
 SAMPSON, Giles 28* (524)
 SARGENT, David 50 (512)
 SCOTT, James 15* (565)
 SCOTT, Matilda E. 55* (523)
 SCOTT, Robert 32 (555)
 SCOTT, Samuel B. 50 (528)
 SCOTT, Zimin? 34 (m) (546)
 SCROGGIN, A. J. 33 (m) (564)
 SCROGGIN, G. W. 49 (m) (563)
 SCROGGIN, Margart 48* (565)
 SELLS, Hillery 40* (531)
 SELS, Jane 49 (544)
 SELS, Lafayette 24 (544)
 SEWELL, J. F. 34 (m) (524)
 SEWELL, Steven J. 40 (525)
 SEWELL, W. C. 31 (m) (563)
 SEWELL, William A. 25 (518)
 SHARP, William 37* (557)
 SHARPT?, Robert 47* (557)
 SHAW, Harriett 13* (539)
 SHELTON, John 73* (551)
 SHELTON, Rubin 24 (551)
 SHILINGS, Mary J. 50* (525)
 SHILLINGS, H. H. 22 (m)* (524)
 SHOOK, Noah 73* (523)
 SHOOP, A. L. 60 (m)* (520)
 SIMNS, James 18* (528)
 SIMNS, Jefferson 45 (529)
 SIMPSON, John 33 (564)
 SIMPSON, William 20 (537)
 SIMS, Elizabeth 18* (566)
 SIMS, Harvy 53 (564)
 SIMS, John 25 (543)
 SIMS, Lucy 20* (561)
 SIMS, William 55 (543)
 SKINNER, Reuben 63 (509)
 SMALLWOOD, John 35* (550)
 SMITH, Abraham 28* (504)
 SMITH, Allen 42 (507)
 SMITH, Amanda 68 (539)
 SMITH, Asa 34* (507)
 SMITH, Calvin 27 (533)
 SMITH, Charles 21 (519)
 SMITH, Charles 63 (523)
 SMITH, Charley 39 (533)
 SMITH, Danniel 46 (530)
 SMITH, David 25* (565)
 SMITH, Ed G. 28* (552)
 SMITH, Elzira 51 (518)
 SMITH, Fannie 58* (507)
 SMITH, Fount 38* (540)
 SMITH, Francis 36 (541)
 SMITH, George 65 (533)
 SMITH, George 70 (507)
 SMITH, George W. 46* (512)
 SMITH, Hiram 35 (527)
 SMITH, Isaac 70* (538)
 SMITH, Jacob 35 (564)
 SMITH, James 21* (505)
 SMITH, Jesse 40 (566)
 SMITH, John 25 (503)
 SMITH, John 28* (522)
 SMITH, John 31 (512)
 SMITH, John 38 (533)
 SMITH, John C. 39* (507)
 SMITH, Juda 56 (565)
 SMITH, Looney 34 (538)
 SMITH, Louisa 46 (534)
 SMITH, Lucinda 40* (561)
 SMITH, Luther T. 33* (528)
 SMITH, Margaret 56 (560)
 SMITH, Margaret 54 (504)
 SMITH, Phillip 31* (520)
 SMITH, Richard 45* (510)
 SMITH, Richard 59* (520)
 SMITH, Samuel 21 (564)
 SMITH, Solomon 26 (504)
 SMITH, Thomas 36 (533)
 SMITH, William 18* (515)
 SMITH, William 44 (515)
 SMITH, William 82 (530)
 SMITTIE, Rubin 66 (522)
 SNGLETON, William 62 (539)
 SOUTH, George 19* (543)
 SOUTH, James 26 (561)
 SOUTH, Joshua 55 (560)
 SOUTH, Thomas 23 (560)
 SOUTH, William 25* (528)
 STALEY, Pleasant 28* (541)
 STANFORD, Mary 14* (560)
 STANTON, Florance 8* (538)
 STARK, Anna 48* (519)
 STEPHENS, Alexander 25 (506)
 STEPHENS, Baalam 40 (511)
 STEPHENS, Burton 55 (511)
 STEPHENS, Charlottie 50 (511)
 STEPHENS, David 34 (566)
 STEPHENS, Edward 53 (512)
 STEPHENS, Edward jr. 27 (512)
 STEPHENS, F. M. 48 (m) (526)
 STEPHENS, Franklin 25* (513)
 STEPHENS, Isaiah 42* (513)
 STEPHENS, Jesse 23 (515)
 STEPHENS, John 51 (513)
 STEPHENS, Lydia 65* (515)
 STEPHENS, Manson 28* (507)
 STEPHENS, Marion 32 (510)
 STEPHENS, Mary 18* (511)
 STEPHENS, Phebe 63 (505)
 STEPHENS, Rufas 31 (511)
 STEPHENS, Russell 62 (512)
 STEPHENS, Savage 29* (511)
 STEPHENS, Seely 30* (505)
 STEPHENS, Susan 89* (510)
 STEPHENS, Wade 25 (507)
 STEPP, Amanda 53 (529)
 STEPP, William 32 (530)
 STEPP, William 36* (561)
 STEWART, Fleming 53* (533)
 STOCTON, B. B. 36 (m)* (525)
 STORIE, Louis C. 23 (518)
 STORY, Henry 29 (562)
 STORY, James 78 (548)
 STORY, Joshua 52 (539)
 STORY, Mary A. 47 (547)
 STORY, Robin 28 (548)
 STORY, Roland 35 (543)
 STUART, Cornela 31* (558)
 SUBLET, Lizzie 70* (559)
 SUMMERS, Rebecca J. 1* (536)
 SWAFFERD, Wm. 39 (521)
 TAYLOR, Berry H. 30 (535)
 TAYLOR, James 25 (535)
 TAYLOR, James 58 (529)
 TAYLOR, John A. 21* (522)
 TAYLOR, Joseph 39* (535)
 TAYLOR, Pleasant 70 (530)
 TAYLOR, William 47 (549)
 TERRIE, Josirah 34 (526)
 THOMAS, Evan 65 (540)
 THOMAS, Louis 23 (540)
 THOMAS, William B. 25 (540)
 THOMPSON, E. 62 (m) (526)

- THOMPSON, H. R. 67 (m) (561)
 THOMPSON, William 35 (538)
 THREEET, Eliza 22* (506)
 THREEET, George 48 (509)
 THREEET, William C. 32* (510)
 TINCH, Anderson 70 (536)
 TINCH, Dallas 23 (535)
 TINCH, George W. 64 (564)
 TINCH, Jackson P. 31 (536)
 TINCH, John 28 (562)
 TINCH, Logan 39 (533)
 TIPTON, Daniel 20* (511)
 TIPTON, Littleton 26 (507)
 TIPTON, William 24 (511)
 TODD, James 38 (514)
 TODD, Margaret 30 (514)
 TODD, Stephen 30 (514)
 TODD, William 25* (514)
 TODD, William 65 (514)
 TOMPKINS, A. 27 (m) (524)
 TOMPKINS, C. J. 30 (m)* (525)
 TOMPKINS, G. J. 24 (m) (524)
 TOMPKINS, George 29 (538)
 TOMPKINS, H. A. 67 (m) (524)
 TOMPKINS, J. M. 23 (m)* (523)
 TOMPKINS, Lafaett 34* (538)
 TURNER, Charles 24 (505)
 TURNER, Eliza 51 (509)
 TURNER, Jaeson 23 (509)
 TURNER, John 36 (505)
 TURNER, Lewis 25* (530)
 TURNER, Millie J. 14* (531)
 TURNER, Nathan 70 (531)
 TURNER, William 19 (505)
 TUTOR, Catherine 27* (529)
 UPCHURCH, Drue? 35 (m) (550)
 UPCHURCH, Hiram? 27 (550)
 UPCHURCH, James 56* (534)
 UPCHURCH, Jane 70* (549)
 UPCHURCH, Joe 25 (548)
 UPCHURCH, Marget 22* (559)
 UPCHURCH, Thos. 49 (548)
 UPCHURCH, William 53* (553)
 VAUGHN, Jefferson 20* (507)
 VEONUM?, Charles 23 [B] (527)
 VOILES, Enoch 39 (537)
 VOILES, Jacob 30 (535)
 VOILES, Nancy 19* (536)
 VOILES, Peggy 58* (536)
 VOILS, G. W. 30 (525)
 VOILS, William 62* (525)
 WALKER, A. B. 44 (m) (562)
 WALKER, Brooks H. 35 (538)
 WALKER, Emanuel 24 (539)
 WALKER, Jackson 28* (560)
 WALKER, Nathaniel 51? (541)
 WALKER, Robert 63 (543)
 WALLACE, Exum? 9* (525)
 WARD, Anna 38 (549)
 WARD, Eliza 56* (536)
 WARD, Eliza 50* (546)
 WARD, Elizebeth 27* (535)
 WARD, James 39 (548)
 WARD, John 55* (535)
 WATERS, Elijah 40 (511)
 WATKINS, J. N. 33 (m)* (516)
 WATSON, Jiles 35 (526)
 WAYNE, Harnah 6* (558)
 WELCH, J. S. 31 (m) (525)
 WELLES, Anderson 54 (542)
 WELLS, Henry 43 (553)
 WESMORELAND, Bet 55 (f)* (552)
 WEST, James P. 43 (553)
 WEST, William 40 (534)
 WESTMORELAND, Jane 37* (530)
 WHEATON, Henry 24* (530)
 WHITEHEAD, Bates 21 (515)
 WHITEHEAD, E. Jane 33* (508)
 WHITEHEAD, Francis 59* (506)
 WHITEHEAD, James 53 (506)
 WHITEHEAD, John 35 (506)
 WHITEHEAD, Matilda 35 (506)
 WHITEHEAD, Robert 26 (509)
 WHITEHEAD, William 20 (506)
 WHITENBURG, Hiram 36* (543)
 WHITENBURG, William 75 (544)
 WHITENBURK, M. 25 (f)* (523)
 WILLIAM, John 22* (559)
 WILLIAMS, A. B. 32 (m) (553)
 WILLIAMS, Daniel 22 (539)
 WILLIAMS, Elija 37* (556)
 WILLIAMS, F. A. 24 (m) (553)
 WILLIAMS, Hardy 38 (534)
 WILLIAMS, Harrison 62* (557)
 WILLIAMS, James 25* (558)
 WILLIAMS, John 43 (539)
 WILLIAMS, Phil 46 (527)
 WILLIAMS, Phlene? 21 m) (534)
 WILLIAMS, Rebeneth 70* (550)
 WILLIAMS, Rutherford 4* (528)
 WILLIAMS, W. B. 65 (m)* (534)
 WILLIAMS, William 41* (541)
 WILLIAMS, William 43 (553)
 WILSON, Berry 59* (515)
 WILSON, Daniel 21 (546)
 WILSON, Eli 21 (546)
 WILSON, George 59 (543)
 WILSON, Jacob 67* (562)
 WILSON, Johnathan 58* (539)
 WILSON, Joseph 19 (515)
 WILSON, Martha 54 (563)
 WILSON, Tenpy 52* (560)
 WILSON, W. F. 28 (m) (523)
 WINAHAM, Richard 44 (504)
 WINAHAM, Thomas 33 (504)
 WININGHAM, John 49 (506)
 WININGHAM, Richard 25* (509)
 WINNINGHAM, Martha 39 (530)
 WINNINGHAM, Solomon 20 (529)
 WINNINGHAM, Thomas 30 (565)
 WOOD, Ader C. 6* (523)
 WOOD, Ann 24* (509)
 WOOD, Delila 46* (518)
 WOOD, Douglas 20* (509)
 WOOD, James 35 (517)
 WOOD, Jeremiah 50* (507)
 WOOD, Jesse E. 43 (520)
 WOOD, John 40 (518)
 WOOD, Sarahan 44 (521)
 WOOD, Winnie 77* (509)
 WOODS, Delila J. 25* (518)
 WOODS, Jessee 45* (522)
 WOODS, Mary 71* (528)
 WOODS, Matilda 50* (528)
 WOOTEN, Thomas 35 (547)
 WRIGHT, Absalom 53 (528)
 WRIGHT, Bausel F. 30 (521)
 WRIGHT, Charles 25 (562)
 WRIGHT, Craton 27* (530)
 WRIGHT, David F. 52 (560)
 WRIGHT, David M. 21 (517)
 WRIGHT, E. D. 53 (m) (566)
 WRIGHT, Harriet 16* (531)
 WRIGHT, Henry I. 7/12 (532)
 WRIGHT, J. F. 42 (m)* (523)
 WRIGHT, Jacob 55 (508)
 WRIGHT, Jacob R. 28* (519)
 WRIGHT, James 30 (508)
 WRIGHT, Jeremiah 66* (529)
 WRIGHT, John C. 48* (558)
 WRIGHT, John L. 24 (519)
 WRIGHT, John T. 31 (519)
 WRIGHT, Joseph 24 (506)
 WRIGHT, L. C. 38 (m) (566)
 WRIGHT, Lemuel 20 (546)
 WRIGHT, Lourena 25 (545)
 WRIGHT, Mary 54* (505)
 WRIGHT, Mathias 61 (517)
 WRIGHT, Matilda 44 (508)
 WRIGHT, Matthew R. 55 (519)
 WRIGHT, Mitchel 50* (528)
 WRIGHT, Nancy 9* (555)
 WRIGHT, Noah 31* (505)
 WRIGHT, Samuel 68 (508)
 WRIGHT, Samuel G? 23 (518)
 WRIGHT, Silas 36 (508)
 WRIGHT, Simr? 25 (508)
 WRIGHT, Thomas 20* (523)
 WRIGHT, W. L. 66 (m) (521)
 WRIGHT, Wesley 43 (537)
 WRIGHT, William 27 (505)
 YORK, George 33 (512)
 YORK, Jane 49 (555)
 YORK, John 21 (541)
 YORK, Mitchell 39 (508)
 YORK, Samuel 21 (512)
 YOUNG, Andrew 28 (551)
 YOUNG, Caroline 27* (538)
 YOUNG, George 26 (532)
 YOUNG, James 47 (511)
 YOUNG, John 21 (511)
 YOUNG, John 35 (513)
 YOUNG, Leander 44 (513)
 YOUNG, Martha 44 (534)
 YOUNG, Robert 50 (552)
 YOUNG, William 52 (532)
 ZACHARY, Charles 2* (560)
 ZACHARY, Emeline 40 (560)
 ZACHARY, Milton 33 (560)
 ZACHRY, Blackston 50 (544)
 ZACHRY, Dill 28 (542)
 ZACHRY, John 38 (544)
 ZACHRY, John sr 77 (544)
 ZACHRY, Polk 34 (544)
 ZAHARY, W. C. 30 (m) (560)
 ZIMMERMAN, George 48 (530)

Abstracted from *1880 Fentress County* by Byron & Barbara Sistler.
 The book includes names and ages of all family members.

MINUTES OF THE SUPERIOR COURT
OF
NORTH CAROLINA AND MERO DISTRICT

Abstracted by Dorothy Scott Johnson

For a complete introduction to this material see Issues No. 1 and 2 of this volume.

All legal definitions or explanations are taken from *Black's Law Dictionary, Fifth Edition*, which will hereafter be referred to as "Black's." Many abbreviations in this work are not in Black's and appear to be the original clerk's own brand of legal shorthand. Since no log exists explaining the meaning of these abbreviations it is necessary to use them as they are written.

The page numbers given here are the pages of the WPA typed material, not the original page numbers.

Continued from *Middle Tennessee Genealogy*, Vol. 7, No. 3

PAGE 107. May term, 1793.

John Rice's Exc's. vs. Thomas Mollory

Case: Plea of Trover [Black's: Action "against a person who *found* another's goods and wrongfully converted them to his own use."

Declaration: In 1795 [Ed: 1785?] in Davidson Co., Mero District, John Rice was possessed of a negro man named Will. On the same day Rice lost Will he came into the hands and possession of Thomas Mollory. Mollory, "contriving and fraudulently intending to deceive the Said John Rice in this particular [case] has not (though often required) delivered the said negro" to Rice. Afterwards. Mollory converted and disposed of Will to his own proper use to the damage of Rice in the amount of £1,000.

Defendant plead Not Guilty.

Jury: 1. Robert Thompson	5. John Brigance	9. James Ford
2. John Cockeral	6. Robert Boyd	10. William Ellice
3. Richard Cross	7. John Laine	11. Frederick Stump
4. Simon Kyrkendol	8. Stephen Cantril	12. [not listed]

Verdict: Witnesses were examined and say they find the defendant not guilty of Trover and Conversion as charged in the declaration.

William Gillaspie

Action: William Gillaspie is excused from serving any longer this term as a juror.

PAGES 107-108

The Territory vs. Noah Sugg [also written Suggs]

Case: Producing counterfeit money.

Declaration: Noah Sugg in custody.

The Grand Jury for the Territory South of the river Ohio state that Noah Suggs, late of Davidson County, Mero District, farmer, on November 1795 [1785?], in Nashville, Davidson County, did pass a counterfeit coin to William Gunn. Said coin was of copper, pewter and brass and made to resemble a gold coin called a French Guinea

which is lawful and current in thee Territory. This was done to the great injury of the said William Gunn and to the great displeasure of Almighty God, against the peace and dignity of our Territory and contrary to the law.

Defendant plead Not Guilty.

Jury:	1. Barkley W. Pollock	5. John Cockeral	9. John Laine
	2. Jonathan Price	6. Simon Kyrkendol	10. Stephen Cantrill
	3. Ephriam Payton	7. John Brigance	11. William Ellis
	4. Robert Thompson	8. Robert Boyd	12. Frederick Stump

Verdict: Not guilty.

The Territory vs. John Cotton

Case: Perjury

Declaration: John Cotton in custody.

Cotton was charged with perjury in the case of The Territory vs. John Eagon. [Ed: No details given.]

Defendant plead Not Guilty.

Jury:	1. James Frazier	5. Robert Laine	9. William Gunn
	2. William Hickham	6. George A. Sugg	10. John Armstrong
	3. John Morgan	7. James Bosley	11. Samuel Buckhanon
	4. Daniel Rowan	8. James Espie	12. Mathew Talbott

Verdict: "Guilty of Perjury as Charged in the Bill of Indictment provided that Isaac Linsey has authority to administer an oath but if he had not we find him not Guilty."

PAGE 110

The Territory vs. John Cotton

Action: It is the opinion of the Court that the Justice had not a power to administer the oath on which the defendant was indicted.

PAGE 108

The Territory vs. John Cotton

Action: William Ferguson called as a witness in this case but failed to appear and give Testimony in behalf of the defendant. He is, therefore, ordered fined unless reasonable excuse is given as prescribed by law.

James Ford

Action: James Ford is excused from serving any longer this term as a juror.

The Territory vs. Noah Sugg

Action: William Skelly proved his attendance as a witness and was awarded £2:4.

The Territory vs. the Cottons and John Eagon.

Action: James Lynn proved his attendance as a witness and was awarded £5:15

Action: Thomas Smith proved his attendance as a witness and was awarded £12:10.

Action: Isaac Lynsey proved his attendance as a witness and was awarded £8:1.

PAGE 109

The Territory vs. James McKain, Jun.

Case: Horse Stealing.

Declaration: James McKain, Jun. is in custody.

The Grand Jury present that James McKain, Jr., late of Sumner Co., Mero Dist., on 15 July 1790, with force and arms in Sumner County, stole one bay mare. She had a star in her forehead and was branded on the mounting shoulder [left] with "J. H." Said horse was valued at £6. She was the property of Aquilla Carmack.

Defendant plead Not Guilty.

Jury:	1. Richard Cross	5. [John] Brigance	9. James Maxwell
	2. Jona Price	6. Stephen Cantrill	10. John Duffell
	3. Simon Kyrkendol	7. Mathew Talbott	11. John Lain
	4. Robert Boyd	8. Samuel Deason	12. Robert Thompson

Verdict: Guilty of horse stealing as charged in the Bill of Indictment.

Appeal: The lawyer for defendant McKain appealed the verdict based on the fact that the Grand Jury presented this case as "Grand Larceny" whereas it was, in fact, Petit Larceny. Appeal denied.

Sentence: The prisoner being called to the bar was asked if he had anything to say or any reason to offer as to why sentence should not be passed against him but saith nothing. Therefore, it is "ordered that you Stand in the Pillory one hour, be whipped on your Bare Back with thirty nine lashes, and that you be branded on the right Cheek with the letter H of the lenthe of three quarters of an Inch, and on the left Cheek with the letter T of the same dimention as the letter H in a Plain and visible manner and that both your ears be cut off, and that the Sheriff of Davidson" County carry out the sentence immediately.

PAGE 110

Hardy Murfee vs. Hugh Leeper

Action: Barkly W. Pollock, proved his attendance as a witness and was awarded £2:19:6.

Cornelius Tison vs. John Gilbert

Action: Noah Sugg, a witness, proves attendance and awarded £4:12.

Action: John Deaderick, a witness, proves attendance and awarded £4:8:8.

The Territory vs. James McKain, [Jr.]

Action: Wm. Neely, a witness, proves attendance and awarded £6:16.

Action: Aquilla Carmack, a witness, proves attendance and awarded £7:12:8.

Action: Martin Harden, a witness, proves attendance and awarded £6:4:8.

Action: Robert Cartwright, a witness, proves attendance and awarded £6:11:8.

Action: Thomas Cartwright, a witness, proves attendance and awarded £3:17:4.

John Rice's Ex'tr. vs. Thomas Molloy

Action: A witness [not named] proved attendance and awarded £2.

PAGE 110

Page 99 of original record: Territory South of the Ohio, Mero District. Hon. John McNairy, Judge.

"At a Superior Court of Law and Equity opened and held for the district of Mero, at the Court House in the town of Nashville on the first Monday in November 1793, and the seventh year of our Independence."

PROCLAMATION: "Proclamation being made that the Several Sheriffs, Coroners, Justices of the Peace, within the district of Mero, Should Make return of the different precepts to them directed recognizances, and inquests by them taken that the Hon'ble Court might proceed thereon."

Davidson County, Mero District, Venire Facias [Black's: Order commanding Sheriff to "cause to come" (summons) prospective jurors].

- | | | |
|---------------------|---------------------------|-------------------------|
| 1. Joel Lewis | 9. James Mears | 16. James Scott |
| 2. Thomas Edmonson | 10. William Walton | 17. Jessee Reed |
| 3. Thomas Hardeman | 11. Thomas Smith (hatter) | 18. Ephriam McLain Jun. |
| 4. Samuel Deason | 12. Barnabas Boyles | 19. Lardner Clark |
| 5. John Motheral | 13. Thomas Hudson | 20. James Hoggatt |
| 6. William Edmonson | 14. George Ridley | 21. Samuel Wilson |
| 7. Andrew Boyd | 15. Thomas Talbott | 22. Joseph Hart |
| 8. Mathew Talbott | | |

Sumner County Venire Facias:

- | | | |
|--------------------|----------------------------|---------------------|
| 1. Abraham Landers | 5. Thomas Strane | 9. Richard King |
| 2. Robert Wilson | 6. Azariah Thompson (dead) | 10. Charles Carter. |
| 3. Thomas Simson | 7. Peter Looney | 11. Thomas Smith |
| 4. Hugh Tinning | 8. William Gillaspie | 12. Thomas Waller |

Tennessee Venire Facias:

- | | | |
|------------------|-------------------|-----------------------|
| 1. William Fort | 5. David Smith | 9. Thomas Johnston |
| 2. Joseph French | 6. John McFarland | 10. [Haydon?] Wills |
| 3. Isaac Wilson | 7. Bazil Boren | 11. John Gilbert |
| 4. Moses Shelby | 8. Thomas French | 12. Barkly W. Pollock |

Tennessee Sheriff fined: "Ordered that the Sheriff of Tennessee be fined agreeable to Law (Nisi). [Black's: Nisi: means "unless."]

"Released. Released upon reasons Shown to the Court on oath." [Ed: This probably relates to the Tennessee sheriff above.]

Thomas Johnston, John Coutts and Jacob McCarty.

Action: Ordered that Thomas Johnston, John Coutts and Jacob McCarty be released from a forfeiture incurred for non attendance as Jurors at May Term 1793, for reasons shown on oath.

Grand Jury.

The following persons were impanelled and sworn as a Grand Jury, viz:

- | | | |
|---------------------------|--------------------|----------------------|
| 1. William Fort (foreman) | 7. Thomas Smith | 13. William Edmonson |
| 2. Mathew Talbott | 8. Lardner Clark | 14. Samuel Wilson |
| 3. Moses Shelby | 9. John Motheral | 15. Thomas Strane |
| 4. Thomas Edmonson | 10. George Ridley | 16. James Hoggatt |
| 5. Bazil Borin | 11. Ephraim McLain | 17. Thomas French |
| 6. Robert Wilson | 12. Joseph French | 18. Thomas Talbott |

Patrick Lyons, Constable

Patrick Lyons sworn to attend the Grand Jury this Term as Constable.

Hugh Tinning

Ordered that Hugh Tinning be excused from serving as a juror this term by reason of his being deaf.

To be continued in the next issue of *Middle Tennessee Genealogy*

TENNESSEE SUPREME COURT RECORDS
(Contributed by Betsy Ragsdale and Gale Bamman, CG)

**Supreme Court Records, Box 219, Middle Tennessee,
1872**

J. R. Hillis, Uria Drake and Isaac Hillis vs George W.
Martin and others)

(Original Bill Heard in Warren County Chancery Court)

The Bill of Complaint of J. R. Hillis, Uria Drake and Isaac Hillis, Complainants against Geo. W. Martin, R. H. Mason, Elijah Martin, Polly Duncan, Wm. R. Martin, Lyman McCrary and Martha his wife, citizens of Warren County, M. M. Brien, Jr. and Mary his wife, J. Fletch Martin, Jennie Martin minors by their guardian M. M. Brien, Jr. of Davidson County and James Jones and Harriet his wife of the State of Alabama and Frank Martin, Emma Martin Floyd Martin, Julia S. Martin all minors and Thomas S. Rogers citizens of Warren County, Defendants.

Complaining your orators would state to your Honor that on or about the 28th day of January 1868 he purchased at a sale made by the Clerk and Master of the Court as Special Commissioner a tract of land lying and being in the County of Warren and sold as the land of Wm. Martin, dec'd....

**Supreme Court Records, Box 219, Middle Tennessee,
1874**

James C. Gambill and others vs Joshua M. Hix and others
(Original Bill Heard in Bedford County Chancery Court)

Transcript of the records of the cross bill in the case of James C. Gambill and wife Martha and D. D. Hix and wife and others vs Joshua M. Hix, Wm. Campbell and John Wilhite in chancery at Shelbyville, Bedford County, Tennessee.

The cross bill of James Stallings as assignee of Jemima Gewley[?], James C. Gambill and wife Martha Gambill, William Stewart, Benton Barrett, the heirs at law of Joshua Stewart and the heirs at law of Samuel Stewart, dec'd. Moore Smiley and wife Lucinda Smiley and Pete Mart [?], filed in the Chancery Court at Shelbyville against Joshua M. Hix as the executor of the estate of John C. Hix, dec'd William Campbell and John Wilhite all of whom reside in Bedford County, Tennessee.

Humbly complaining your orators and oratrixes would respectfully represent unto your Honor that on the __[blank]

day of __[blank] 185 __[blank] John C. Hix as the administrator on the estate of Margaret Stewart, dec'd. filed his bill....

**Supreme Court Records, Box 219, Middle Tennessee,
1872**

James A. Barbee, Admr of George B. Barbee, dec'd. and
James A. Barbee vs James C. Barbee and others
(Original Bill Heard in Robertson County Chancery
Court)

The Bill of Complaint of James A. Barbee, administrator upon the estate of George B. Barbee, and of James A. Barbee in his own right, a citizen of Robertson County, Tennessee vs James C. Barbee and his wife Minerva C. Barbee of Weakley County, Tennessee and W. G. Barbee of Robertson County, Tennessee and E. H. Proctor and Solon Perrin of Kentucky, Defendants....

**Supreme Court Records, Box 220, Middle Tennessee,
1874**

J. B. Parrish vs John Jones
(Original Bill Heard in Rutherford County)

The Bill of Complaint of J. B. Parrish, Wm. A. Parrish, Woodson M. Parrish, citizens of Davidson County and of Wm. B. Lillard of Rutherford County, Tennessee against John Jones, clerk and commissioner for the use of the children and heirs of John B. Hicks, dec'd. and others - Henry M. Hicks, H. T. Prater and wife Mary E. Prater, Ann Martin, James H. Hicks, Henry Hicks and James Hicks, the last of whom are minors under the guardianship of John E. Dromgoole - Louisa E. Hicks under the guardianship of Jno. Woods, all of Rutherford County, Tennessee, Walter Sutton and wife Elizabeth Sutton of Bedford County, Tennessee, Everline Ward a feme sole who is a non-resident of the state of Tennessee, against Samuel N. Elliott also a non-resident of the state of Tennessee, W.[?] Y. Elliott, Thomas A. Elliott and Jem[?] A. Elliott of Rutherford county, Tennessee, Alfred B. Elliott who also resides beyond the limits of the State of Tennessee and who is at present in Rutherford County, Tennessee and against said John E. Dromgoole and said John Woods.

Humbly complaining your orators show to your Honor that Jno. B. Hicks late of Rutherford County, Tennessee departed this life intestate some time prior to the year 1866. At the May term 1866 of the County Court for Rutherford County the said H. M. Hicks and others heirs at law of said intestate exhibited their petition to said County Court praying for the sale of a certain tract of land... The defendants H. M. Hicks, Mary E. Prater, Everline Ward, James H. Hicks, Eliza Ann Martin, each being children of said Jno B. Hicks dec'd. claimed in said petition one share severally of said lands. Defts Elizabeth Sutton wife of Deft. Walter Sutton, Henry Hicks and James Hicks, being grandchildren claimed jointly one share of said lands in right of their deceased father Isaac M. Hicks, dec'd. who died prior to the date of their said grandfather's death - the defendant Louisa E. Hicks being the only child of Jno. M. Hicks, de'cd. (son of Jno. B. Hicks, dec'd.)....

**Supreme Court Records, Box 203, Middle Tennessee,
1874**

E. A. Hicks, Admr. of Young Pepper, dec'd. vs Mary D. Pepper et al
(Original Bill Heard in Robertson County)

E. A. Hicks, a citizen of Robertson County, Tennessee and Admr. of Young Pepper, dec'd. vs Mary D. Pepper and Young Pepper, widow and infant son of Young Pepper, dec'd., and Jo. C. Stark, Jas. J. Holman and wife Leota Holman, G. P. Martin and Richard Pepper, defendants, all citizens of Robertson County, Tennessee.

Complt. would show to your Honor that on the 25th day of January 1873 Young Pepper died intestate in Robertson County, Tennessee leaving Deft. Mary D. Pepper his widow, of whom was born his infant son Young Pepper a few days after the death of dec'd. and they, the said Mary D. and Deft. Young Pepper are his only heirs at law....

**Supreme Court Records, Box 203, Middle Tennessee,
1873**

H. C. Murphey vs Solomon Green and others
(Original Bill Heard in Robertson County Chancery Court)

H. C. Murphey, a citizen of Robertson County, Tennessee, complainants vs Solomon Green of the same county and state and John Shaw, a citizen of the County of Cheatham, Tennessee, defendants.

Complainant would most respectfully represent to your Honor that some five years since he qualified as the guardian

of his sister Nancy J. B. Murphey that he has made regular settlements... that his ward and sister, the said Nancy J. B. is now between thirteen and fourteen years of age and some three or four weeks since she, without the knowledge or consent of your complt. intermarried with the Deft. Solomon Green who is a man of no substance, having neither land, money, or property of any kind or description, not even a horse....

**Supreme Court Records, Box 202, Middle Tennessee,
1874**

W. M. Daniel vs A. Weill and others
(Original Bill Heard in Montgomery County Chancery Court)

The Bill of Complaint of W. M. Daniel a citizen of Montgomery County vs A. Weill and wife Lizzie Weill, Ida H. Beaumont, Georgia C. Beaumont, Frank S. Beaumont, and C.W. Beaumont guardian all citizens of Montgomery County.

Complainant shows to your Honor that on the 8th of January 1869 Deft. C. W. beaumont filed his bill in the Chancery Court at Clarksville against said J. H., G. C., and F. S. Beaumont, alleging that he was the regularly qualified guardian for defts. Ida H, Georgia C., and Frank S. Beaumont, minors under twenty-one years, that said minors were the children and heirs at law of F. S. Beaumont, dec'd....

**Supreme Court Records, Box 202, Middle Tennessee,
1872**

Lorena J. Swann vs Henry Z. Borum
(Original Bill Heard in Wilson County)

On motion of the Plaintiff and with the assent of the court the writ in this cause is amended by inserting the name of Joseph B. Marks, administrator of Solomon Swann, for the use and benefit of Lorena J. Swann, Wilson G. Swann, Barthena F. Swann, John A. Swann, and Thomas M. Swann, the widow and minor children of Solomon Swann, dec'd....

**Supreme Court Records, Box 202, Middle Tennessee,
1873**

Joseph G. Mitchell and others vs James Vass and others
(Original Bill Heard in White County)

Joseph G. Mitchell and William L. Mitchell vs Wallace B. Cope and John F. Voss and Joseph G. Mitchell and William L., Mitchell vs James Vass, administrator of John F. Vass, dec'd., Wallace B. Cope, Rachael Cope, Sarah N. Cope, John

W. Cope, Mary P. Cope, children of John W. Cope, and F. M. Sims is their guardian, Hiram Little, Sarah Little, Andrew Robins, Sarah E. Robins, Stephen W. Robins, Susan R. Robins, Sidney S. Robins, and William Robins their guardian, John Martin and Nancy Martin, Sarah E. Johnson, Mary M. Johnson, Stokeley D. Johnson their guardian, Seahorne Holland and Charlotte Holland his wife, Johanna M. Cope, Stephen W. Johnson, and Margaret R. Johnson his wife, Charles Hudgins and Zepha Hudgins, James Cope, Jacob Martin, and Elizabeth Martin, Wiley M. Cope, Malinda R. Cope, and Waman L. Cope and Henderson Keithley....

**Supreme Court Records, Box 201, Middle Tennessee,
1868**

**Enoch N. Dickson vs Benjamin F. Puckett et al
(Original Bill Heard in Rutherford County Chancery
Court)**

The Bill of Complaint of Enoch N. Dickson, a citizen of Rutherford County, Tennessee vs Benjamin F. Puckett and William A. Puckett, executors of Charles Puckett, dec'd. and against said parties in their own right, the first a citizen of Madison, the last of Rutherford County, Tennessee - against Hiram Jenkins and wife Nancy, Henry Kirbey and wife Mahala of Rutherford County, Walter Key and wife of Madison County, Tennessee, Charlotte Lindsley of the State of Texas, Thomas Powell and wife Sally of Marshall of County, Mississippi and against James F. Fletcher of Rutherford County, defendants....

**Supreme Court Records, Box 201, Middle Tennessee,
1869**

**C. B. Harrison and others vs William H. Lytle and others
(Original Bill Heard in Rutherford County Chancery
Court)**

C. B. Harrison and wife Sophia R. Harrison and John Lytle surviving executor of Wm. F. Lytle, dec'd. vs William H. Lytle, Jno. Patterson and wife and others.

To the Sheriff of Rutherford County, Tennessee, Greeting: You are hereby commanded to summon John Patterson and wife Julia Ann, Mary Catharine Lytle, Robert Lytle, F. H. Lytle, Wm. H. Lytle, Evander Lytle, Richard Lytle, Marian Lytle, Sophia E. Lytle and Eva Lytle to appear before the Chancellor of our court...to answer a bill exhibited in said court by C. B. Harrison and wife Sophia R. formerly Sophia R. Lytle against John Patterson and wife Julia Ann and others....

**Supreme Court Records, Box 199, Middle Tennessee,
1871**

**Thomas Petway and others vs David Young, Admr. of
Wm. Petway, dec'd. and others
(Original Bill Heard in Wilson County)**

The Bill of Complaint of Thos. Petway, Jno. C. Jackson, Richd. Averett, Eli P. Sims, Henry Averett, Peter Averett, and W. B. Ramsey, all citizens of Wilson County, State of Tennessee against David Young, administrator of Wm. Petway, dec'd. and in his own right and as husband and his wife Elizabeth Young, Susan Petway and W. E. Foust, Deputy Sheriff, citizens of Wilson County and Milton A. Underwood and his wife Nancy Underwood, citizens of the State of Missouri, Rebecca Underwood if she shall be alive, if not then her unknown heirs and Frances Underwood, citizen of the State of Kentucky.

On the 29th July 1811 Thomas Mitchel bought from the executrix and executors of Jno. J. Clark of Providence, Rhode Island, a tract of land in Wilson county, computed at 3937 acres at one dollar per acre... On the 19th October 1811 Thomas Mitchel executed his last will and testament and died in a short time afterwards and at the December Term 1811 of the Wilson County Court his will was duly admitted to probate and his sons Everett Mitchell and Tazwell Mitchell were qualified as executors. After devising to his wife for life 320 acres of land and to his sons Everett, Tazwell, Allen Thomas and Henry Mitchell each 320 acres, he makes by the 7th clause the following devise "I lend during her life to Frakney Petway 100 acres of land and at her death I give the said hundred acres of land to her son Thomas Petway to him and his heirs forever." Then follows loans of 100 acres of land to each of his daughters Polly Mitchell, Scotty Mitchell and Rebecca Mitchell....

**Supreme Court Records, Box 199, Middle Tennessee,
1872**

**William A. Pruett vs William S. Smith and others
(Original Bill Heard in Wilson County Chancery Court)**

Bill of Complaint of William A. Pruett and wife Amelia W. Pruett citizens of Wilson County, Tennessee against William S. Smith, administrator of John Y. Smith, dec'd. and also in his own right, Jane C. Cable (formerly Sith), James G. Sims and wife Martha K. Sims, Rankin R. Lannum and wife Mary L. Lannum, Lucinda A. Nettles, formerly Bass, and her husband John Nettles, John P. Smith, Robert T. Smith, all citizens of Wilson and state aforesaid.

Your orator and oratrix will state and show your Honor that the above complainants and defendants are a portion of the heirs at law of John Y. Smith, dec'd. who died intestate....

**Supreme Court Records, Box 198, Middle Tennessee,
1869**

Mary McKinley & Jennie Green vs J. J. Green and others
(Original Bill Heard in Davidson County Chancery Court)

The Bill of Complaint of Mary McKinley and Jennie Green, both married women and citizens of Davidson County, Tennessee and Philip Lindsley, next friend, against J. J. Green, Daniel McKinley, George F. Martin, J. D. Winston, G. H. Wessel, Robert Thompson, partners trading as "Wessel Thompson," A. G. Merritt, administrator of L. A. G. Noel and Daniel Noel and D. H. Bailey, partners trading as S. A. G. Noel & Co., all citizens of the State of Tennessee.

Humbly complaining your oratrices beg to say to your Honor that they are the wives of defendants J. J. Green and Daniel McKinley, that they have been married a long time and that by reason of the prodigality of their husbands that they have been compelled to labor hard for the support and maintenance of themselves and the children, each of your complainants having large families of children.

Your oratrices would state that defendants Green and McKinley are both pecuniarily involved and have been for many years and are now utterly insolvent, and incapable of meeting their liabilities and the many judgments that have been obtained against them before the various courts in this county....

**Supreme Court Records, Box 197, Middle Tennessee,
1871**

David Hays et al vs G. Melvin Barker et al
(Original Bill Heard in Davidson County)

Plaintiff introduced Clarissa Mullen, who says she was acquainted with James and Alcey Rankin since she was a small girl, they lived on Cedar Street at the same house and lot where the defendants live. Alcey and James Rankin are both dead, died a long time before the war, they were man and wife and free persons of color. Kizire was the only child and she is dead and left Caroline Hays the plaintiff her only child. After Alcey's first husband James Rankin died she married a man by the name of Douglass. Alcey Rankin always recognized Kizire as her daughter....

**Supreme Court Records, Box 196, Middle Tennessee,
1871**

Thomas McKee vs Jesse Alexander et al
(Original Bill Heard in Wilson County)

The predicate of this settlement is the assumed interest in a negro woman, Juory [?] given under the will of Jno. Majors to Nancy Donnell or children. This Nancy Donnell was Josiah Donnell's first wife to whom he was married sometime prior to 1830. One of the children of whom there were

two is Alexander's wife. The negro woman was given to Donnell in 1823 or 1824. She was sold in 1829 or 1830. Major's will was made Ma__ [?] 23, 1839 in which he confirms the gift of the negro woman to Nancy Donnell or her children....

**Supreme Court Records, Box 196, Middle Tennessee,
1872**

James M. Lewter et al vs Margaret Lewter et al
(Original Bill Heard in Giles County Chancery Court)

James M. Lewter, admr. of Kinchen Lewter, dec'd., Matthias T. Lewter, Robert E. Coffman and Jane Lewter, all of Giles County, vs Margaret Lewter, William Lewter, Everlilian Lewter and Fannie Lewter, Sarah Lewter, Wiley P. Lewter, Mary Lewter, Celestia Lewter and Susan Lewter, Ann Eliza Scott, Mary Scott and Alice Scott all of Giles County and minors under the age of twenty-one years except the first named and have no regular guardian, Edward Lewter of the State of Alabama who is under twenty-one years of age and has no regular guardian, Alexander Burford and his wife Jane Burford, Emily Freemant and her husband ____ [blank] Freeman, Mary Williamson and her husband Thomas Williamson, Celestia Williamson and her husband John Williamson, Walter McMillin and James J. McMillin the last three of whom are minors under the age of twenty-one years all of whom reside in the State of Mississippi.

Complainants respectfully show to the court that Kinchen Lewter died at his residence in Giles County in September 1868 intestate leaving him surviving as his only heirs and distributees his widow the complainant Jane Lewter and four children and children of five deceased children, viz: complainant Jane M. Lewter and Matthias T. Lewter and defendants Jane Burford wife of Alexander Burford, and one Kinchen D. Lewter who has since died and his grandchildren Sarah Lewter, Wiley P. Lewter, Mary Lewter, Celestia Lewter and Susan Lewter, children of Henry Lewter, dec'd. who died before his father, Ann Eliza Scott, Mary Scott and Alice Scott children of his daughter Rebecca Scott who died before her father, complainant Robert E. Coffman only child of his daughter Mary Coffman who died before her father, defendant Edward Lewter only child of Wm. Lewter who died before his father, Emily Freeman wife of ____ [blank] Freeman, Mary Williamson wife of Thomas Williamson, Celestia Williamson wife of John Williamson, Walter McMillin and James J. McMillin, children of his deceased daughter Lucretia McMillin who died before her father. The said Kinchen D. Lewter died since the intestate leaving him surviving his widow the defendant Margaret Lewter and three children, viz. William Lewter, Everlilian Lewter, and Fannie Lewter his only heirs and distributees, the last three of whom are minors.

The said Kinchen Lewter died seized and possessed of about 400 acres of land....

QUERIES

NOTICE: WHEN SUBMITTING QUERIES PLEASE CHECK FOR CORRECT SPELLING AND LEGIBILITY OF NAMES, PARTICULARLY SURNAMES WHEN HANDWRITTEN. NAMES WILL BE SHOWN IN QUERIES AS BEST CAN BE DETERMINED WHICH MAY NOT BE WHAT YOU INTENDED. WHERE THE CORRECT SPELLING CAN'T BE CONFIRMED USE THE ONE YOU PREFER FIRST WITH OPTIONAL SPELLING IN PARENTHESES.

OVERALL: Looking for any info that I can find about a William OVERALL & his family. He was in Watauga TN around 1775 & in Fort Nash around 1780. According to family legend he was granted some land in central TN. He later became a captain, not sure when. If you could provide me with any info about the OVERALLs in the area around 1770-1800 I would be very grateful. Mylinda Bryan/AAFES HQ Pacrim/APO AP 96378-5163.

BRYANT: Thomas BRYANT, Joseph BRYANT & John BRYANT were all in Grainger Co TN, owning land. I need info about Joseph & Thomas. I will pay postage, etc. Nina M. Martin/34953 Mathews Rd/Eugene OR 97405.

HOUSTON/HOOPER: William HOUSTON (d 6 Apr 1853) m Sarah Elizabeth HOOPER & lived in Bedford Co. Children: Caleb P., William Jr, Lydia, Darah Louisa, & Mary Ann. Willing to share info. Dorothy Weberling/8415 Autumn Way/Clinton MD 20735/ (301)868-2373.

HOOPER: Benjamin & James. James m Judith & lived in Bedford Co. Ch: Sarah Elizabeth, William Houston, Joseph & George. I am trying to find the link between Benjamin & James & Colonel George HOOPER of Buckingham Co VA. Do not believe this line is connected to the Absolom HOOPER line. Willing to exchange info. Dorothy Weberling/8415 Autumn Way/Clinton MD 20735/ (301)868-2373.

CARTWRIGHT/TOWNSEND/FLEMING/HOWARD/DOCKERY: Need parents of Vincent CARTWRIGHT who m Theny KOEN 1802 Davidson Co TN; par of Richmond TOWNSEND m 1825 Williamson Co TN to Mary JORDAN (b 1809 GA) par unk; Nancy FLEMING (b ca 1830 TN) par unk m 1847 Washington Co TN to Robert Kyle WILSON (b Hawkins Co TN); par of Leroy Rankin DOCKERY m 1844 Tusc. Co AL to Arena HOWARD (b 1825 AL) par unk. All of these went to TX before Civil War. Claudine Mulhern/ P O Box 311126/New Braunfels TX 78131-1126.

BATEMAN/THOMPSON: Would like to correspond with anyone working on the BATEMAN family of Williamson Co TN. Also the THOMPSON family of Wilson Co TN. Mrs Mary Huffman/612 Shenandoah Dr/Brentwood TN 37027.

REYNOLDS/OAKLEY/HESTER/HARRIS/HOPKINS/WOODS/FAUCETT/PERRYMAN/KEMP: Seek info on Ezekiel REYNOLDS (1760-1840S) of Bedford Co and Richard OAKLEY (1751-1856) of Marshall & Bedford Cos. Lewis REYNOLDS m Lively OAKLEY, dau of Richard. Was Lewis son of Ezekiel? Exch info on desc. of Isaac PERRYMAN and Henry KEMP in Wilson Co & HESTER, HARRIS, HOPKINS, WOODS, FAUCETT AND McADAMS fams. of Bedford, Marshall & Rutherford Cos. Jeff Reece/1550 North Parkway #610/Memphis TN 38112.

MORELAND/SAVAGE: James A. MORELAND (b 1824) m Elizabeth SAVAGE (b 1826 Jackson Co TN). Who were their ancestors? Venson MORELAND (b 1795 SC) & Nancy ? (b 1795 VA) lived next to James & Elizabeth in Jackson Co TN. John MORELAND (b 1777 VA, d 1853 Smith Co TN) & Eva (b 1776 NC) also lived near James & Elizabeth. Could they be related? Their dau Nancy Savage MORELAND (b 1856 Jackson Co TN) m Isaac RICHARDSON (b 1857 Jackson Co TN). Who were the parents of Samuel G. RICHARDSON, Isaac father? James McCoin/312 Seven Oaks Trail/Knoxville TN 37922/(615)539-0426.

WOODARD/WRIGHT: Need date & place of marriage of Elizziebeth or Lizzie WRIGHT to J. H. WOODARD. Lizzie was born 1858 in England to George & Sarah WATLING/WATLAND. Lizzie died ca 1947 Honey Grove TX. Marriage was most probably in TN ca 1880's. Daphene Willoughby/7117 Sparta Pike/Watertown TN 37184.

PIERCE: Would like to correspond with any one working on PIERCE's in TN. Richard W. Pierce/Rt 1, Box 160/Byrdstown TN 38549

ESPEY (ESPY,ESPIE): Seeking info about ancestors of Alexander ESPEY who was one of the builders of the blockhouse at Nashville at the time of early settlement. He was a father of John ESPEY (b 1818 Nashville, in the blockhouse), and who m Catherine WRIGHT of VA in Rutherford Co on 22 Dec 1828. Please contact me if you have any research on the ESPEY family. Ann Bean/4235 Los Olivos Rd/Merced CA 95340

WILSON/WEAR: David WILSON (b 1773 VA) m Jenny WEAR in Greene Co TN 1796. Their son George M. WILSON (b 1815 Meigs Co TN) m Elizabeth WOOD in 1842. Who were the parents of David WILSON & Jenny WEAR? George's son, William Harvey WILSON (b 1846 Meigs Co TN, d 1897 Meigs Co TN) m Elizabeth BENNETT (b 1849 Sequatchie Co TN, d Marion Co TN). James McCain/312 Seven Oaks Trail/Knoxville TN 37922/(615)539-0426.

LOVE: Need parents & siblings of Allen LOVE of Brunswick Co VA. Allen's daughter Jannett LOVE m Thomas WASHINGTON 22 Nov 1784. They moved to Leland TN, near Nashville, in 1805. His will dtd 20 Mar 1818 names: wife Jannett; children; Gilbert G., Thomas, James G., Mary E., & William L.; grandchildren William W. & Thomas G. MASTERTON. Will appreciate any info. William Sep Love/PO Box 3076 Oxford AL 36203.

LOVE: William LOVE (b ca 1774 Southampton Co? VA) m (1) Wilmoth EXUM in Southampton Co in 1799 & had one dau Mary. In 1808 he m Lavina EXUM in Southampton Co. They left the county in 1814 & were in Davidson Co TN by 1818 where son Henry T. was born. Later that year they moved to Limestone Co AL where he died in 1856. Children: Mary m Alexander L. McKINNEY, Nancy m Watson DAVID, (my ancestors) Martha T. m George LYNES, Robert C. or E., Henry T. m (1) Virginia McGAUGHEY (2) Rebecca J. WOODARD. All these marriages were in Limestone Co. Who were William LOVE's parents & where were he & the family from 1814-1818? Will share LOVE info & will appreciate any help. Estha Cole/115 W. Commerce St/Loretto TN 38469.

THOMPSON: Nathaniel THOMPSON (b ca 1769 York ? Co SC). Will probated 19 Jan 1849 Maury Co TN. Need maiden name of wife Jane. Second wife Mary CALDWELL, widow of T. G. CALDWELL. Ch of Nathaniel & Jane: Ann Ewing m John W. CLANTON; John A. m Jane W.; James Madison m Ruth Clemons DAVIDSON & moved to MS; Jane; Mary N. m a WHITE & moved to Dresden TN; Esther Elizabeth m George C. STOCKARD. Mrs F. M. Gossum Jr/201 Court Drive/Fulton KY 42041.

CALDWELL: Need ancestry of John CALDWELL (b 1 Sep 1731 prob Ireland, d 29 Nov 1821 Montgomery Co TN). Wife's name unknown. Ch: Samuel m Nancy HOWELL; John m Margaret; Robert; Thomas m Betsy WILKERSON; Elizabeth "Betsy" m George WILKERSON; Sarah m George MICKLE; Jane m John TAGGART; James m Mary DAVIS. Mrs F. M. Gossum Jr/201 Court Drive/Fulton KY 42041.

ADAMS: John ADAMS (b MD, d ca 1823 Montgomery Co TN, prob coming there from Christian Co KY). Wife Eleanor (b 1775, d 1856/57). Ch: Sarah m John C. MICKLE; Eliza m Young P. BARBER; Hilary; Susannah; John H. m Ellen FLETCHER; Emma; Addison; Andrew Jackson m Elizabeth; Amelia/Araminta (?); Amanda F. m Gabriel P. BAGWELL. Who were parents of John & Eleanor? Mrs F. M. Gossum Jr/201 Court Drive/Fulton KY 42041.

BOONE: Bryant BOONE (15 Dec 1789-21 Jan 1837) with wife Mary & mother Mary (HARE?) BOONE moved to Davidson Co TN from Hertford Co NC ca 1810. Lived Davidson Co until ca 1833 when moved to Graves Co KY. Ch: Louisa m John RUPARD; Sallie Ann m Thomas COX; James m Catherine LATTA; Frances C. N. m Wm J MARSHALL; Mary Elizabeth m Rev. John P. STANFIELD; Daniel R.; William Felton m Agnes ALLOWAY; Nancy Caroline m Wm B. STANFIELD & Dr S. T. PAYNE; Andrew Richmond m Sallie Ann DALLAM; Eveline Tennessee m Rev. Wm R. YOUNG & J. P. CHEATHAM; Bryant Van Buren. Any information appreciated. Mrs F. M. Gossum Jr/201 Court Drive/Fulton KY 42041.

BURK(E)/BANISTER/O'SHERIDAN: John BURK & wife had two daughters, Mary "Mollie" (b ca 1863) m John BANISTER 1891; Anne (b ca 1864) m J. R. O'SHERIDAN. Need all pre-1900 info. Kathleen Bryant/2025 Elk Cove/Millington TN 38053.

LOFTUS/McGRATH/O'MARA: Hannah O'MARA m Patrick H. McGRATH in double wedding with sister Anne O'MARA & Mark LOFTUS 4 Feb 1862 at St. Mary's Nashville. Parents Edward & Brigid O'MARA, brother Michael, maybe other siblings in Nashville at that time. Seek info on above. Kathleen Bryant/2025 Elk Cove/Millington TN 38053.

LILES/ROSEBERRY/HODGE: Looking for parents & siblings of Hugh LILES (LYLES, LISLE). He was in: Burke Co NC in 1784; Davidson Co TN (Richland Creek area) 1787-1809; Warren Co MO 1809 until his death in 1840. Was Elizabeth ROSEBERRY his wife? What is the relationship between Hugh LILES, Robert ROSEBERRY & Francis HODGE? Roberta Liles Zachary/635 Sycamore Ave/Shafter CA 93263.

HARDISON/VOORHIES: My research involves two family names (my grandparents): Margaret HARDISON & Austin Irwin VOORHIES. They & other family members were from Columbia (Maury Co TN) and the nearby area. I would greatly appreciate any info regarding these names. Joan V. Sherman/30445 St Andrews Blvd/Mt Plymouth FL 32776/(904)735-1399.

OF INTEREST

Microfilm Rental & Purchase

Historic Resources, Inc., Marketers and Distributors
for the American Genealogical Lending Library, PO
Box 329, Bountiful, UT 84011-0329

National Archives Microfilm Rental Program, PO
Box 30, Annapolis Junction, MD 20701

Write to above addresses for details. Including an
SASE is a good idea.

* * *

The Montgomery County Historical Society Newsletter
has started a chronological history of Montgomery County
during the 1870s. Quite interesting. For information on the
society write PO Box 262, Clarksville, TN 37041-0262

* * *

Walker County (Georgia) Historical Society
Anyone with Walker County connections should look
into this group. We received a newsletter (16 pages) that
is way above average. The address is PO Box 707,
LaFayette, Georgia 30728

* * *

**1994 National Genealogical Society Conference in
the States** will be held in Houston, Texas 1 - 4 June
1994. for conference program and registration brochure
write to : 1994 NGS Conference in the States/4527 17th
Street, North/Arlington, VA 22207-2399

Williamson County New Records Facility Open

The Williamson County Preservation of Records
is a new facility located in the basement of the old Post
Office at Five Points in Franklin, Tenn.

Hours: 9:00 A.M. to 4:30 P.M.
Monday, Wednesday, Friday and Saturday

Illinois State Genealogical Society & Sangamon State University

have joined together to sponsor the Genealogical Institute of
Mid-America, to be held June 26-30, 1994 in Springfield,
Illinois. Designed for beginning, intermediate and advanced
genealogists, the institute will feature speakers nationally
known in the field of genealogy. We notice Lloyd Bockstruck
is teaching *Military Records* which immediately puts this
on our list of places we'd like to be late June. For brochure
or further information contact: Julie Slack/SSU/Office of
Continuing Education/Springfield, IL 62794-9243/phone:
217-786-7464

* * *

Corlew Reunion, July 9, 1994, 2nd Saturday - Noon.
Montgomery Bell State Park, Burns, TN. Contact
Ouidabel Corlew 615-441-3975 or Mrs. Joe McMillin,
615-789-5231

Back issues of *Middle Tennessee Genealogy* are available as follows:

Vols. 1 & 2	\$8 per volume, \$2 per issue
Vols. 3 & 4	\$14 per volume, \$3.50 per issue
Vol. 5 forward	\$16 per volume, \$4.00 per issue

To order

Send check or money order with your request for specific issue(s) to:

Middle Tennessee Genealogical Society
P.O. Box 190625
Nashville, TN 37219-0625

MIDDLE TENNESSEE GENEALOGICAL SOCIETY
P. O. Box 190625 / NASHVILLE, TN 37219-0625

Membership Application

Name _____ Phone _____

Address _____ County _____

City _____ State _____ Zip _____

Occupation _____

Surnames and Counties being searched (include up to 18) _____ New Membership ☐ Renewal ☐

Make check or money order payable to Middle Tennessee Genealogical Society. Memberships \$18 per year. If paid after June 30, the dues are \$21. Add \$5 postage for Canada.

MIDDLE TENNESSEE GENEALOGICAL SOCIETY

P. O. Box 190625

Nashville, TN 37219-0625

Address Correction Requested

Non-Profit
Organization
U. S. POSTAGE
PAID
Permit No. 3229
Nashville, TN